

Memorial School Building Project

Young Families Community Meeting

N-3



MANCHESTER MEMORIAL ELEMENTARY SCHOOL
MANCHESTER-ESSEX REGIONAL SCHOOL DISTRICT, MASSACHUSETTS



JCI ARCHITECTURE

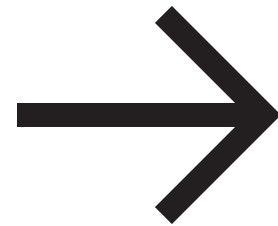
WELCOME & INTRODUCTIONS

THE SCHOOL DISTRICT'S PROCESS

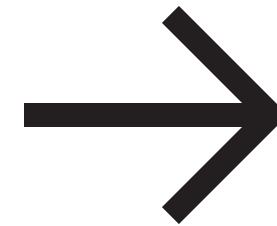
Began with three schools in need



MIDDLE HIGH SCHOOL
COMPLETED 2009



MEMORIAL ELEMENTARY SCHOOL
IN PROCESS (YOU ARE HERE)



ESSEX ELEMENTARY SCHOOL
NEXT STEP



PROCESS & SCHEDULE

THE SCHOOL DISTRICT'S PROCESS

Effort began in 2013 with an Elementary School Facilities Needs Assessment Report by Habeeb & Associates & Elementary Facilities Task Force and Community Survey

SOIs Submitted to MSBA for both Memorial and Essex Elementary Schools in January 2015



PROCESS & SCHEDULE

THE SCHOOL DISTRICT'S PROCESS

January 2016

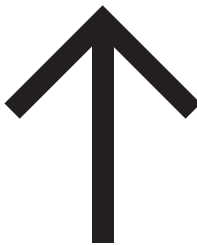
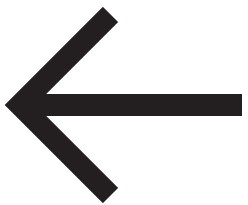
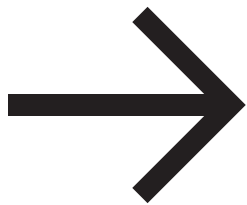
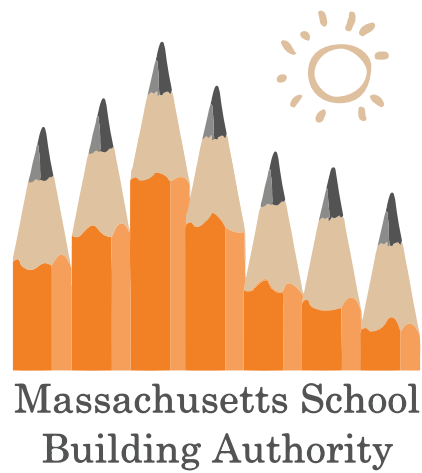
Memorial Elementary Accepted into MSBA's Eligibility Phase

September 2016

Accepted into Feasibility Phase



ORGANIZATION & PROJECT TEAM



JcJARCHITECTURE

ORGANIZATION & PROJECT TEAM



MEMORIAL SCHOOL BUILDING COMMITTEE

Local committee recognized by the MSBA to oversee the design and construction of public school facilities

Caroline Weld CO-CHAIR

Ann Cameron CO-CHAIR

Pam Beaudoin SUPERINTENDENT

Avi Urbas

Alva Ingaharro

John Willis

Jay Pagliarulo

Andy Oldeman

Lisa O'Donnell

Remko Brueker

Adam Zaiger

Tyler Virden

George Scharfe

Gordon Brewster

Charlie Hay

Sarah Creighton

Maggie Tomaiolo

Jake Foster



ORGANIZATION & PROJECT TEAM



DORE & WHITTIER MANAGEMENT PARTNERS

Owner's Project Manager acts as the District's representative and is responsible for managing the project from design through construction.

Michael Burton PROJECT DIRECTOR

Steve Brown PROJECT MANAGER

Christina Shefferman ASSISTANT PROJECT MANAGER



ORGANIZATION & PROJECT TEAM

JCJ ARCHITECTURE

Design team which includes a variety of Architectural and engineering consultants.
Responsible for developing the building design.

Jim LaPosta PRESIDENT / PRINCIPAL-IN-CHARGE

Daniel Ruiz SENIOR PROJECT MANAGER

Lauren Braren SENIOR PROJECT ARCHITECT

Emily Czarnecki SENIOR INTERIOR DESIGNER



ORGANIZATION & PROJECT TEAM



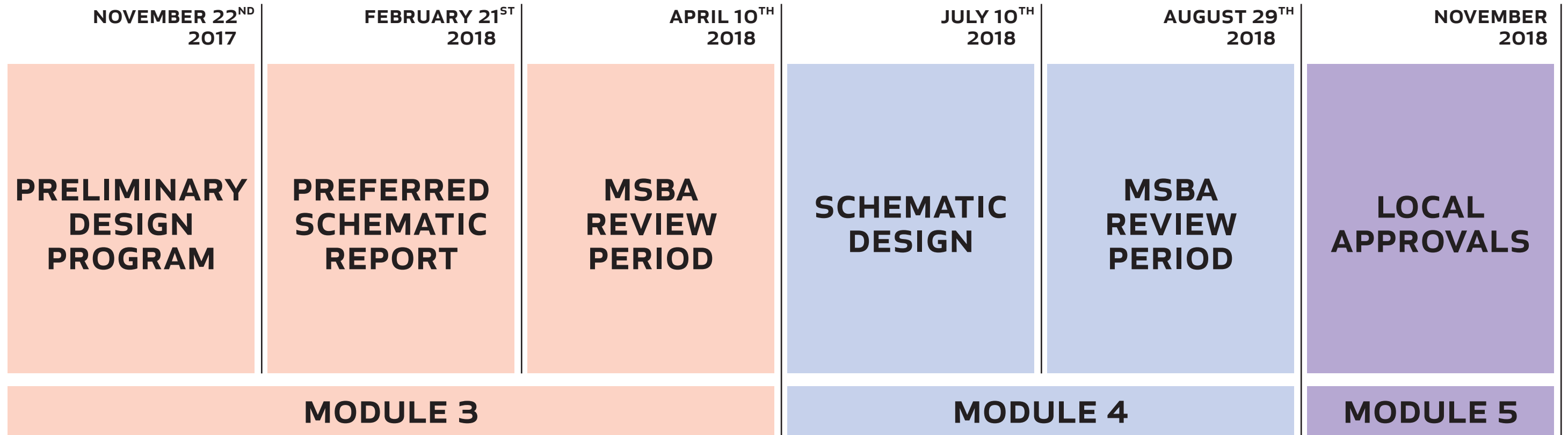
THE MASSACHUSETTS SCHOOL BUILDING AUTHORITY

**A State Agency Created to Reform Funding of Capital
Improvement in the Commonwealth's Public Schools**

They Support the Design and Construction of Educationally
Appropriate, Flexible, Sustainable and Cost-Effective Schools



FEASIBILITY PHASE SCHEDULE

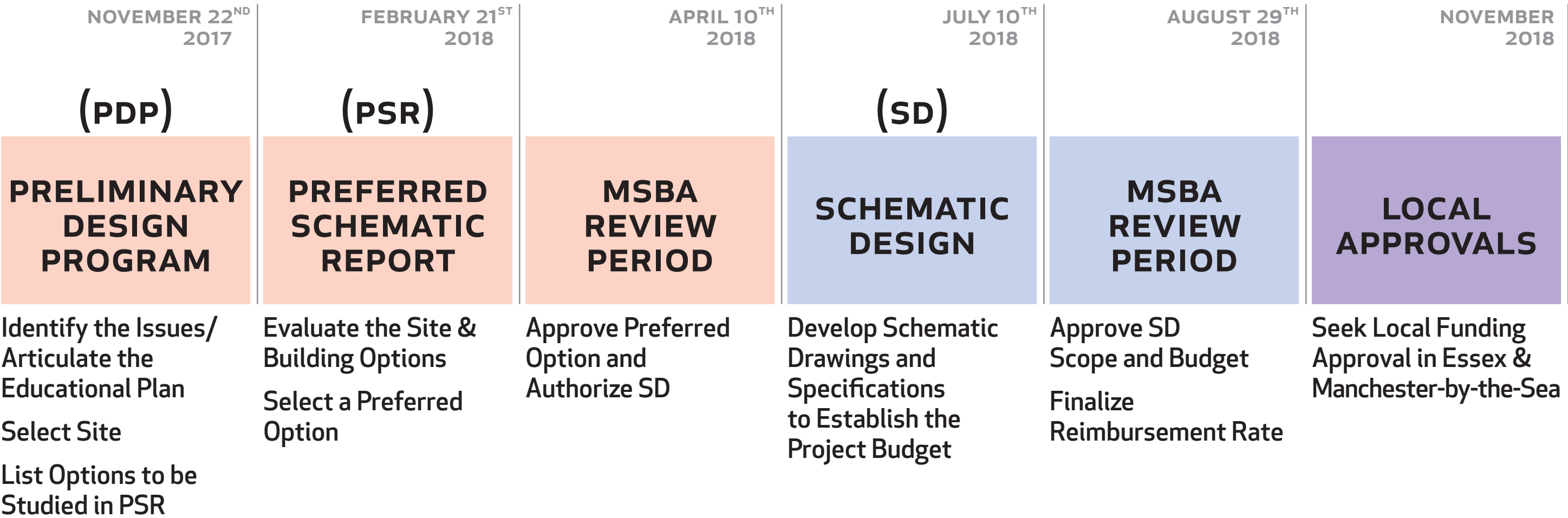


Community Input is Important Throughout the Process



PROCESS & SCHEDULE

FEASIBILITY PHASE PROCESS



If Project is Approved: Proceed to Detailed Design and Construction

PROCESS & SCHEDULE

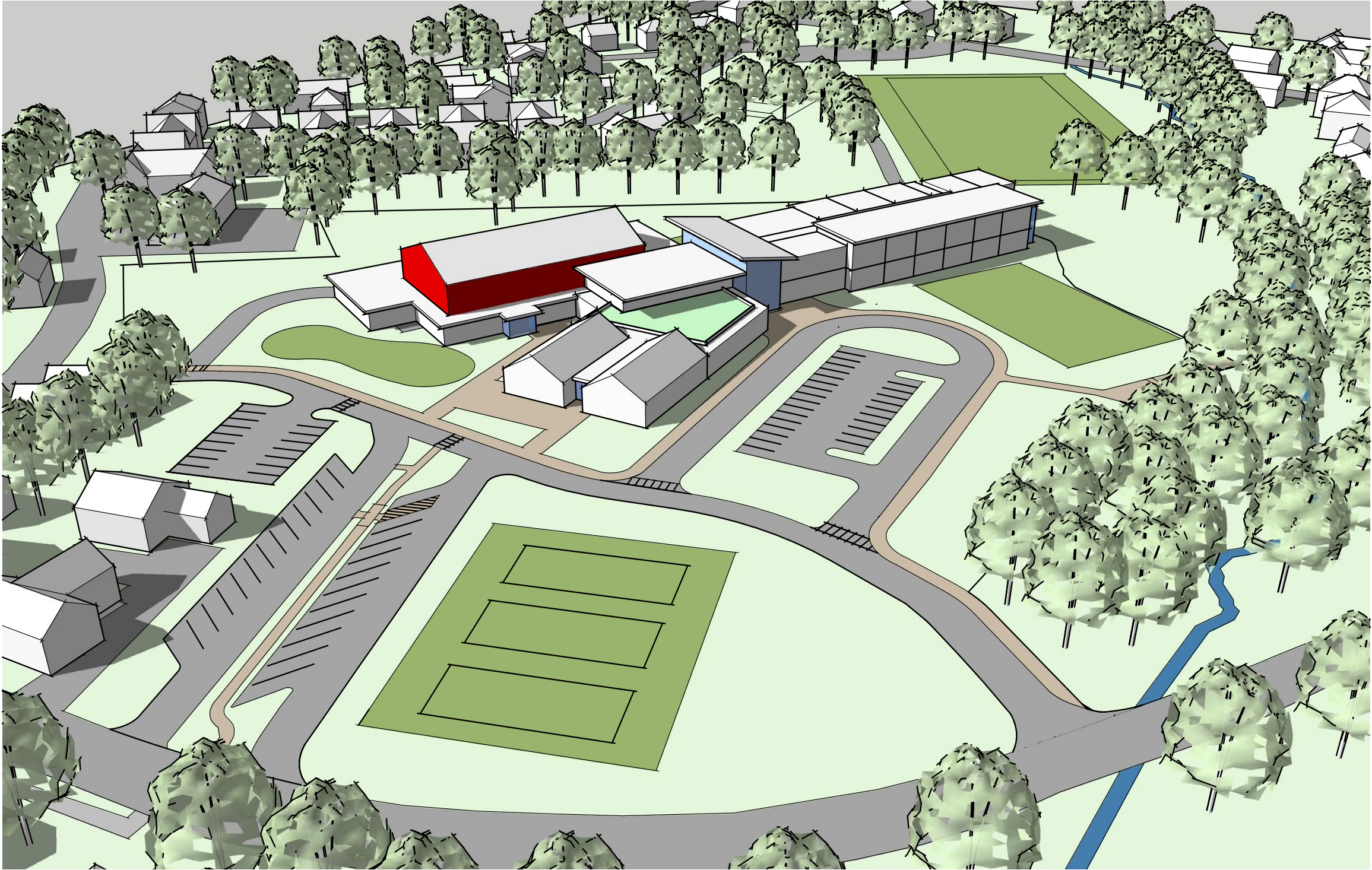
FEASIBILITY PHASE ACCOMPLISHMENTS

- ✓ **Building Existing Conditions Survey**
Architectural / Structural / Mechanical / Electrical/
Plumbing-Fire Protection / Technology
- ✓ **Site Survey**
- ✓ **Wetlands Delineation**
- ✓ **Geotechnical Investigation**
- ✓ **Hazardous Materials Survey**
- ✓ **Phase I Environmental Report**
- ✓ **Traffic Impact Analysis**
- ✓ **Educational Visioning Sessions (2)**
- ✓ **Building Committee Mtgs (18)**
- ✓ **Community Meetings (3)**
- ✓ **Various Sites Considered (7)**
- ✓ **Schemes Developed (14)**
- ✓ **Building Systems Considered**
- ✓ **Preliminary Design Program Submitted**
- J Preferred Schematic Design**

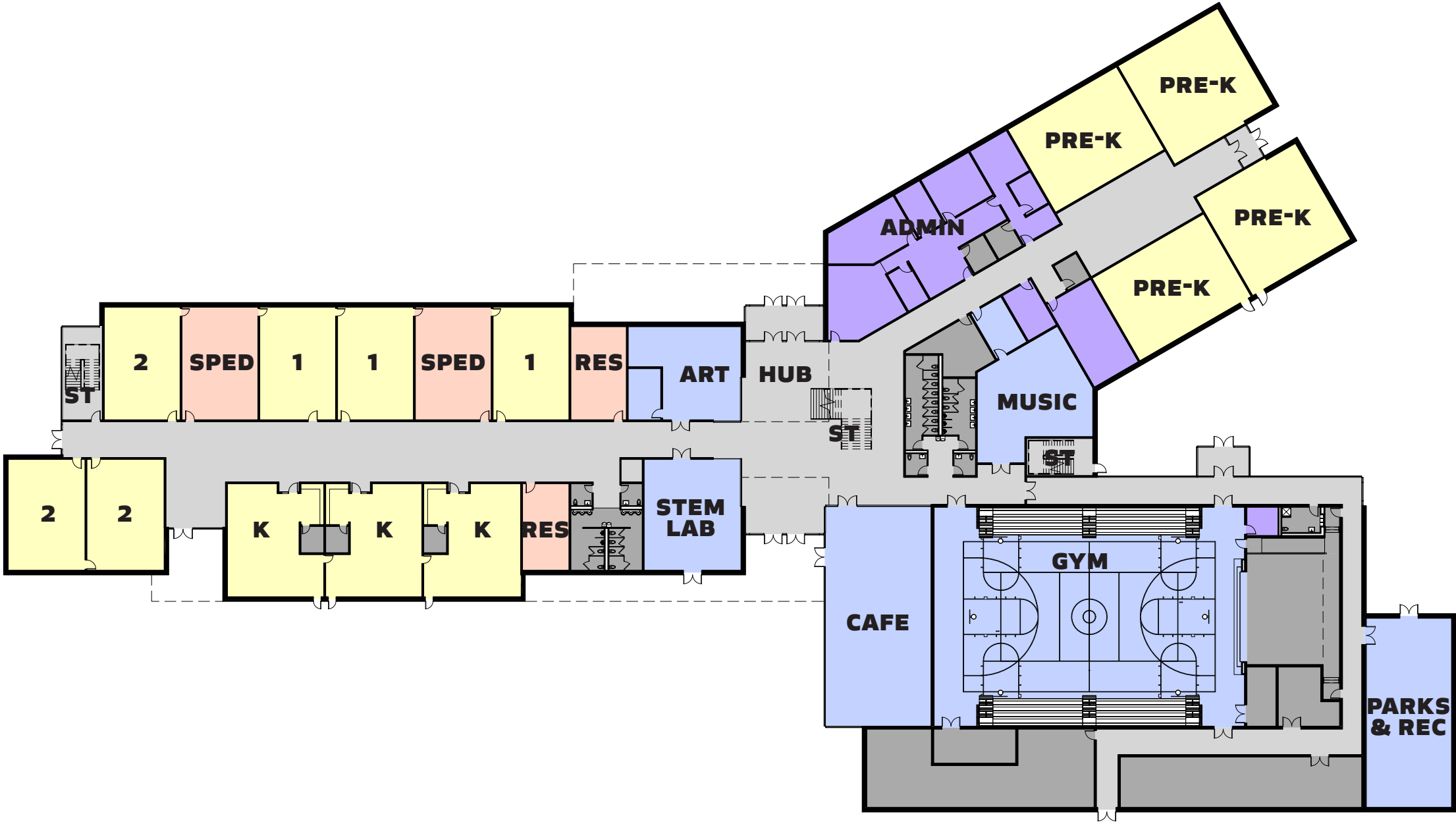




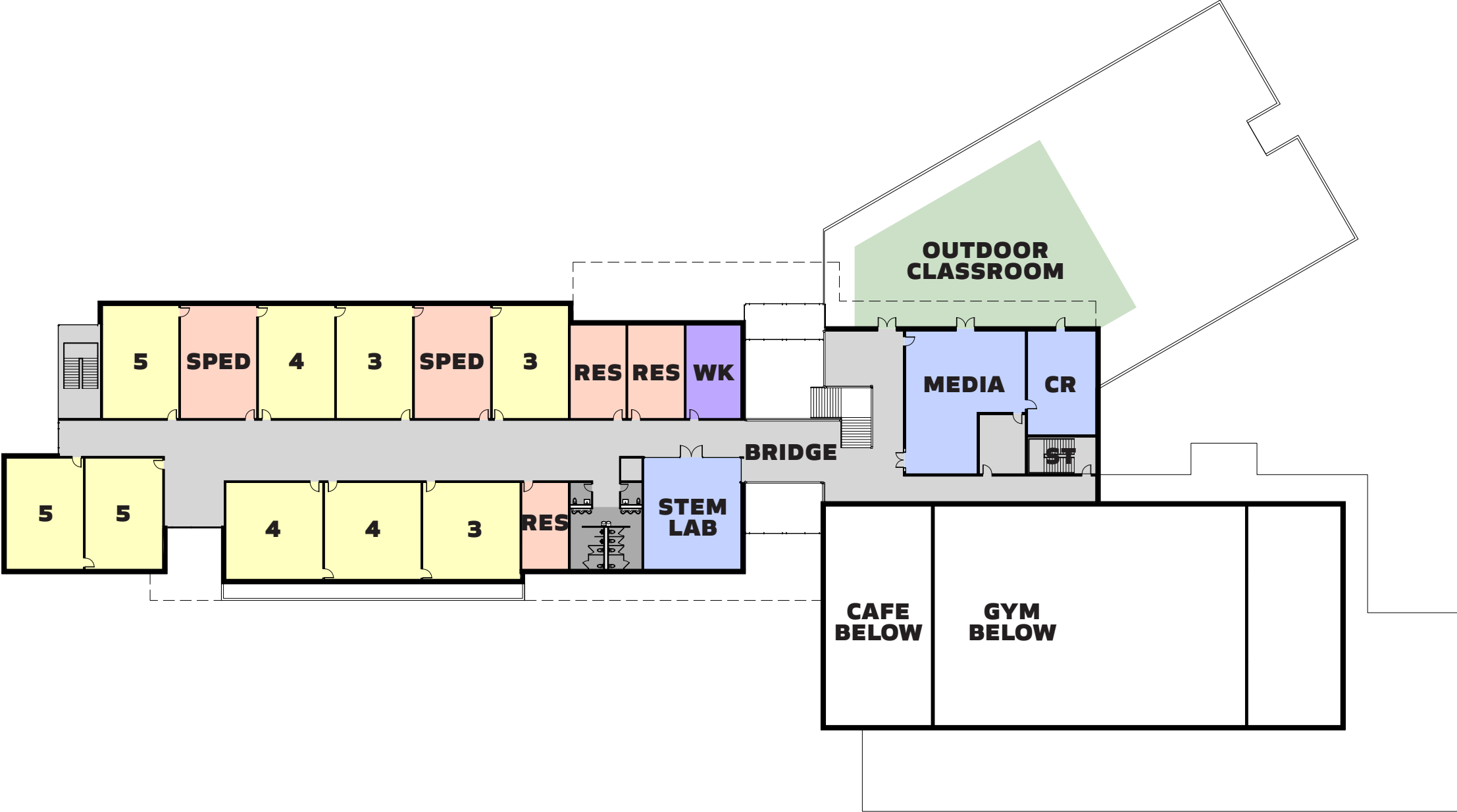
BUILDING MASSING



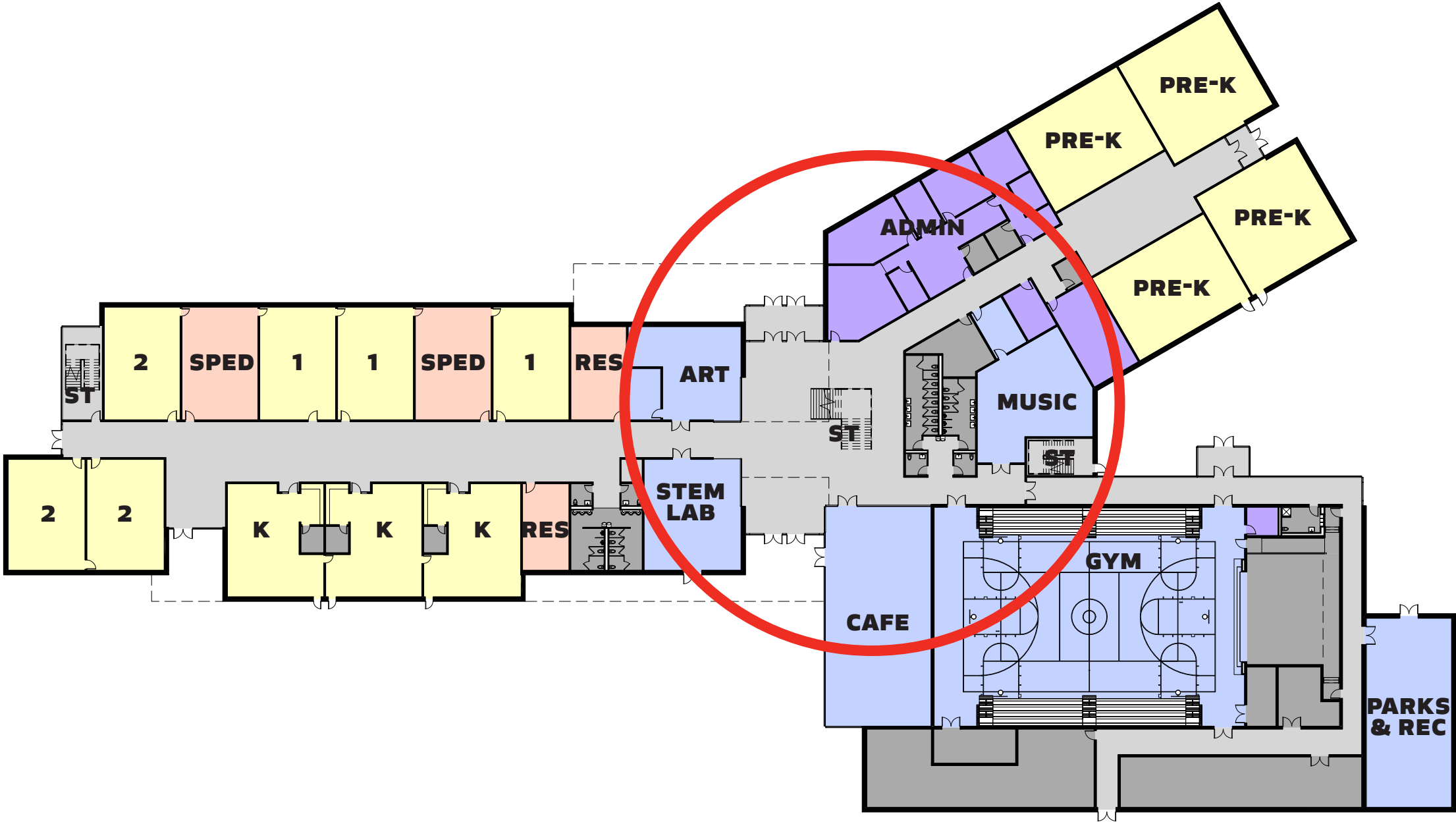
FIRST FLOOR PLAN UPDATED



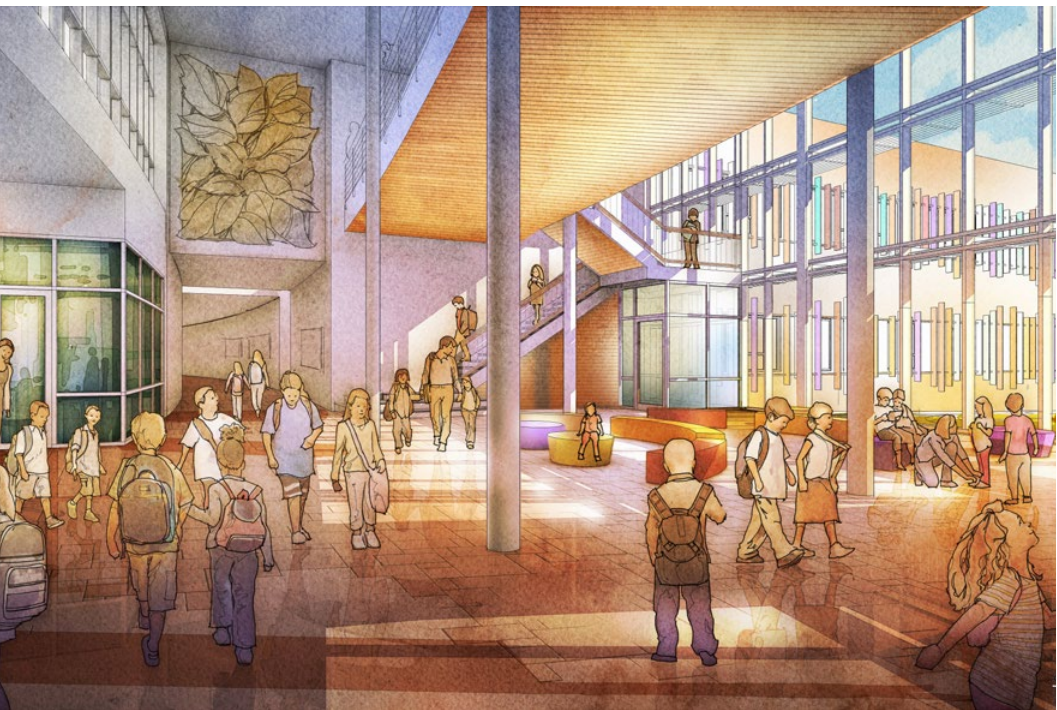
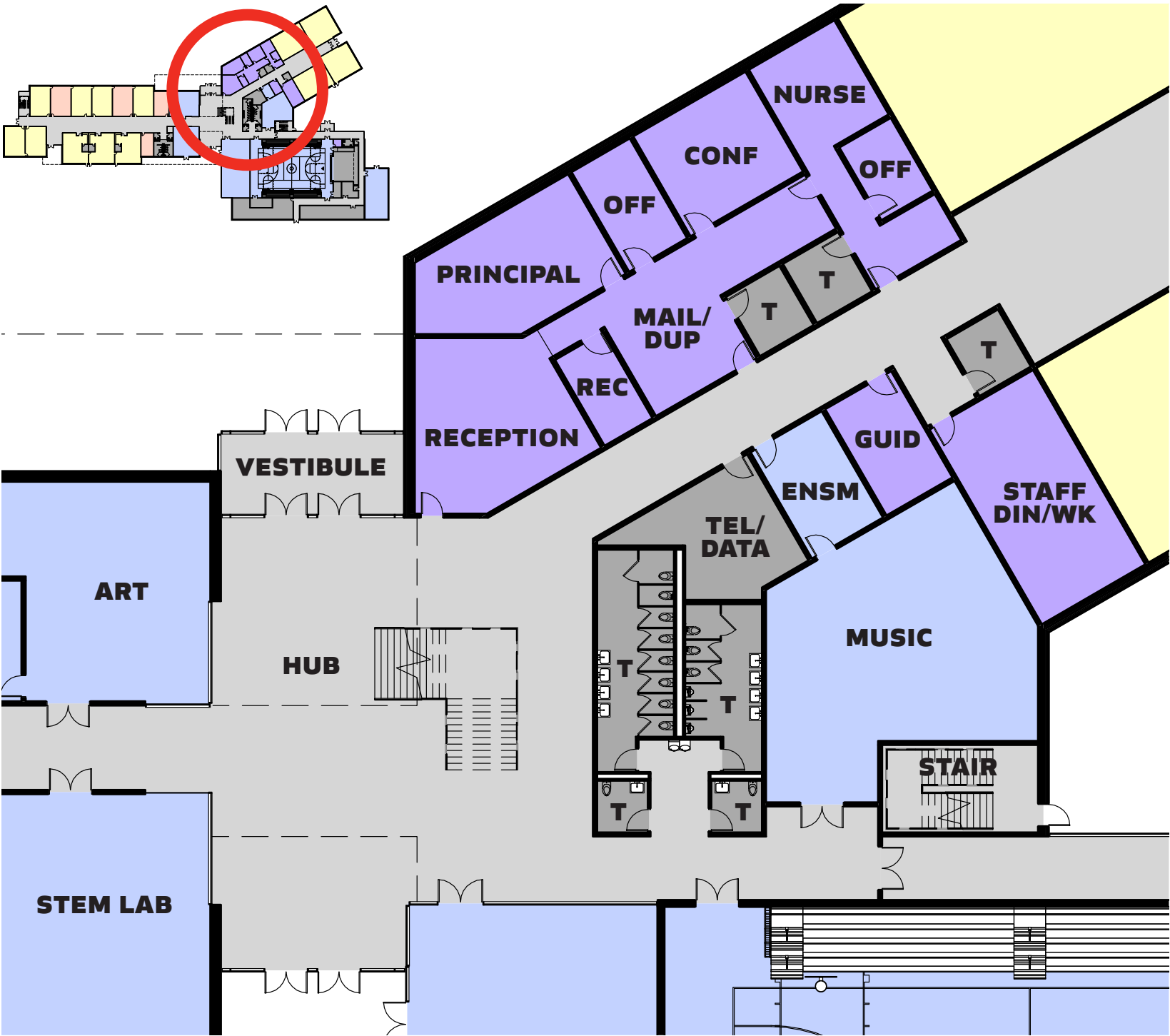
SECOND FLOOR PLAN UPDATED



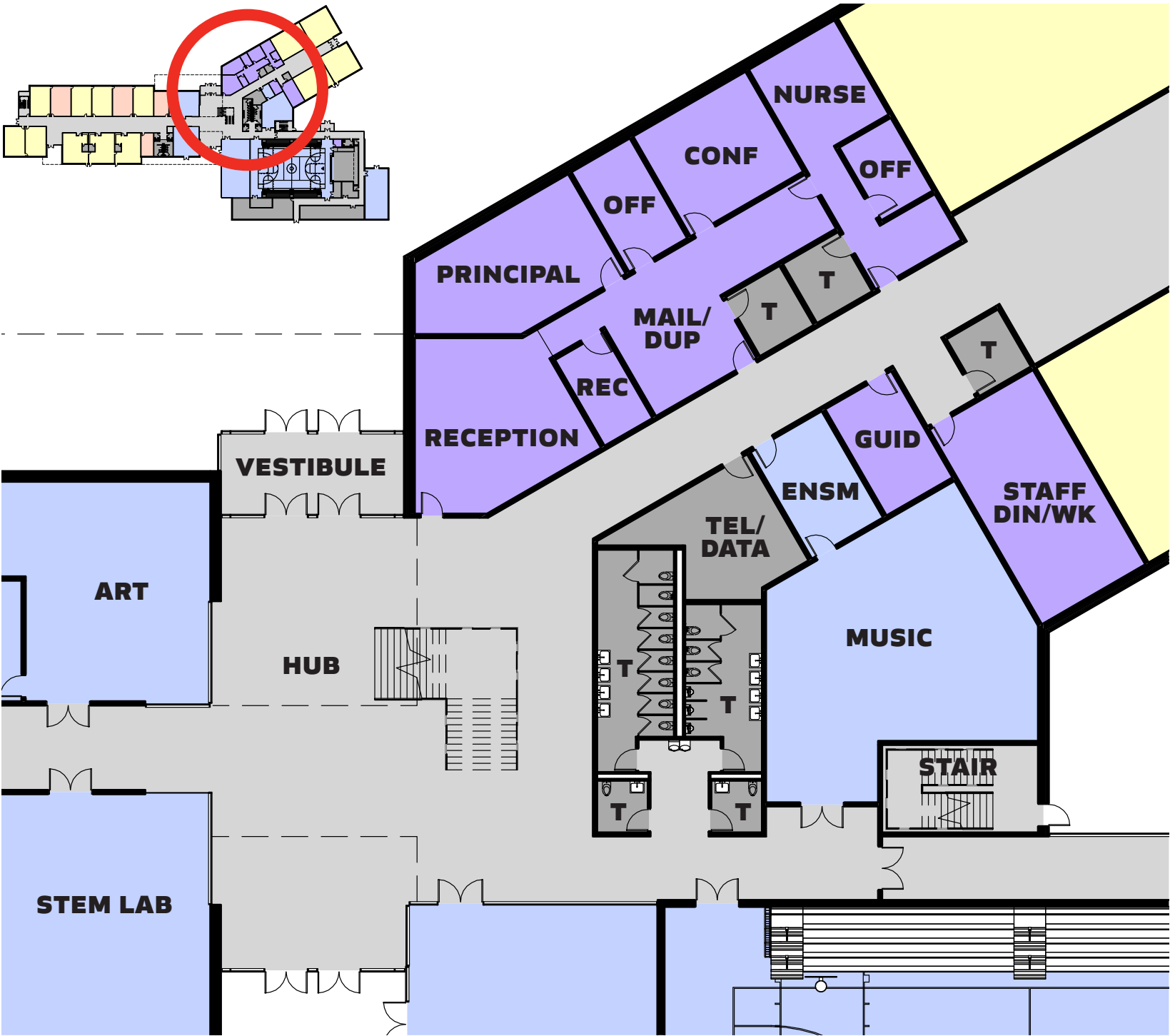
FIRST FLOOR KEY PLAN



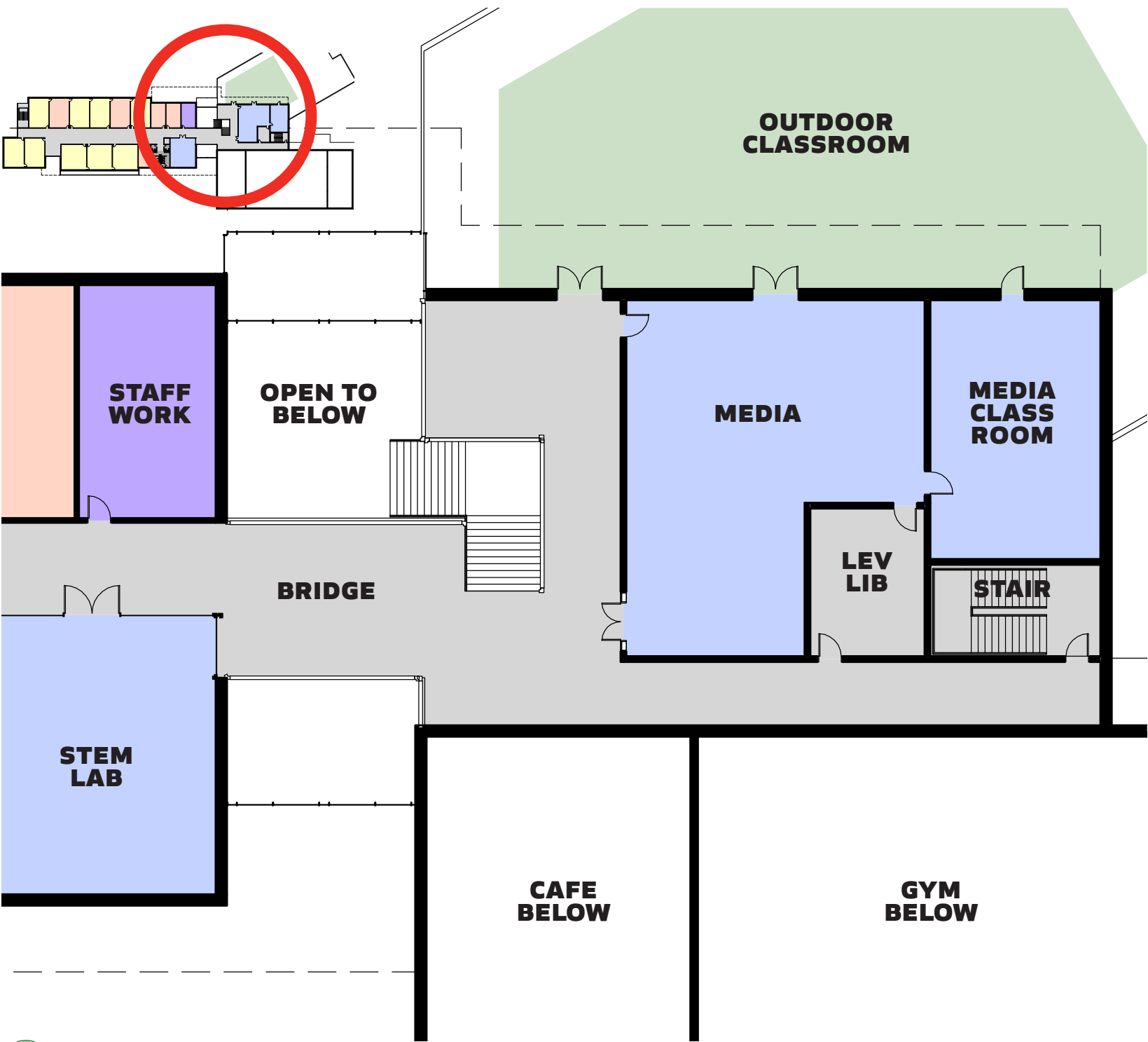
HUB



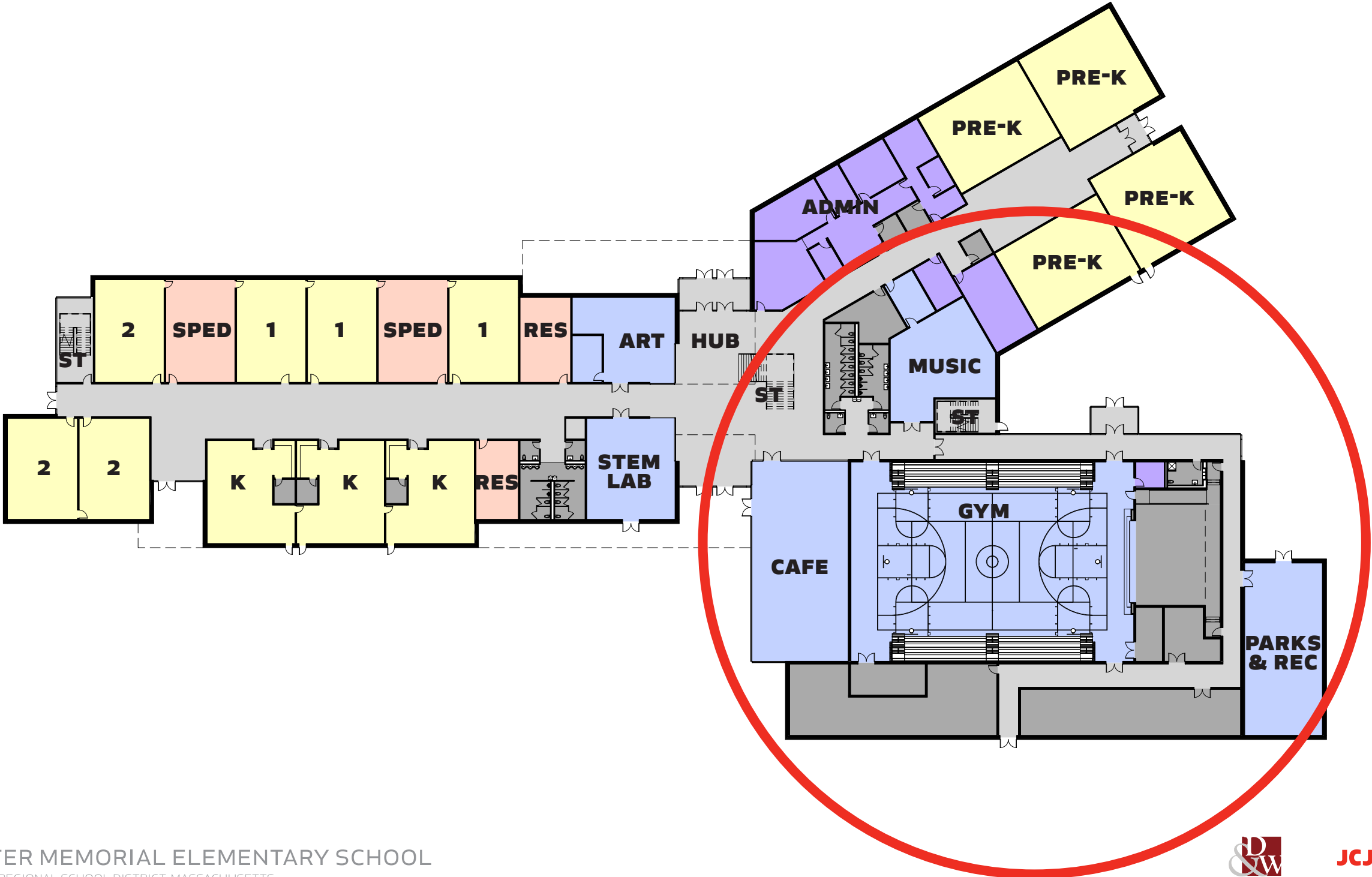
HUB



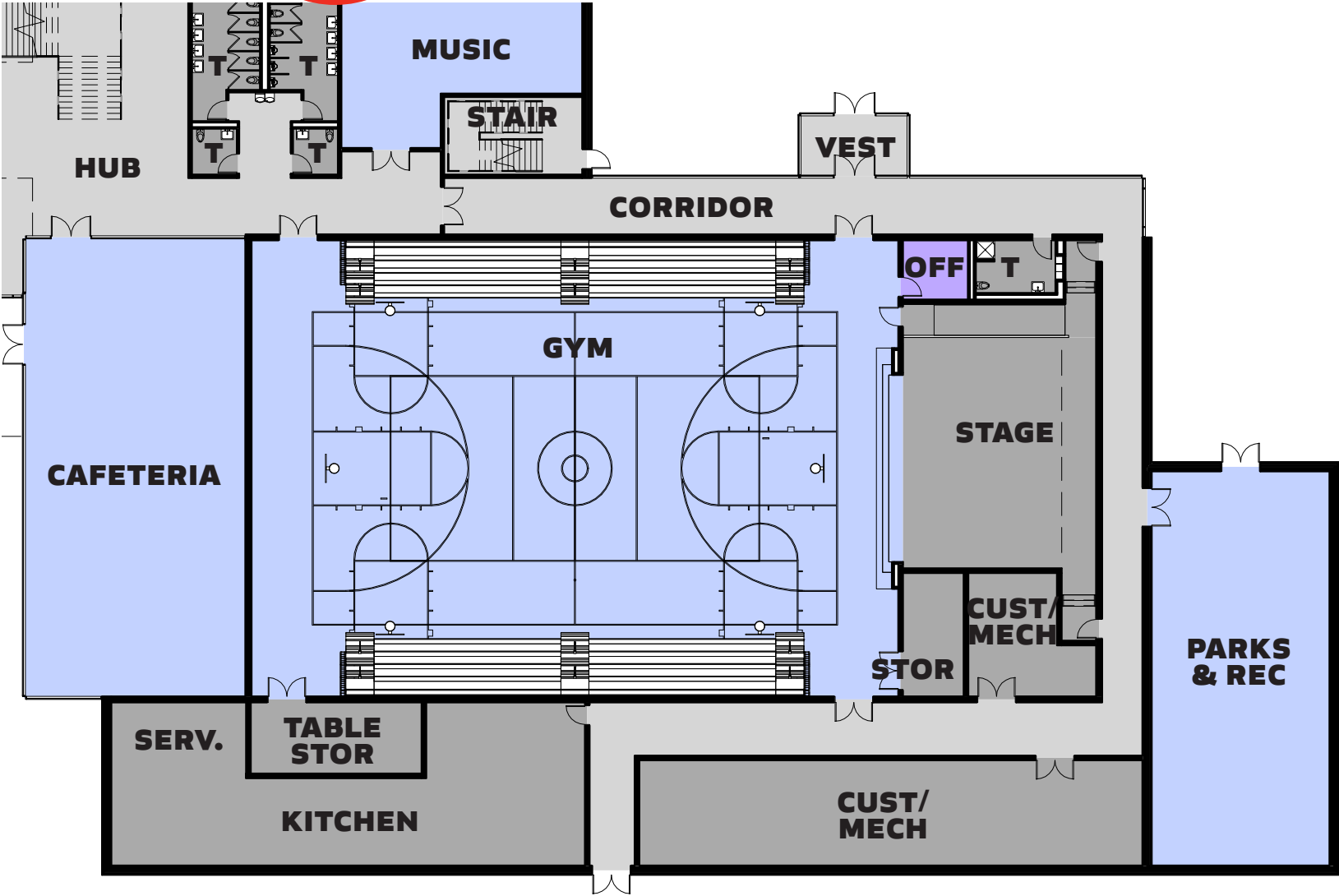
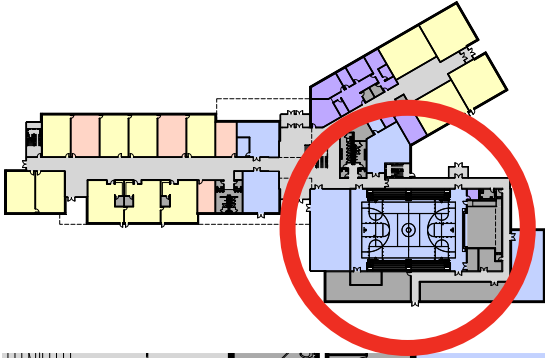
MEDIA CENTER



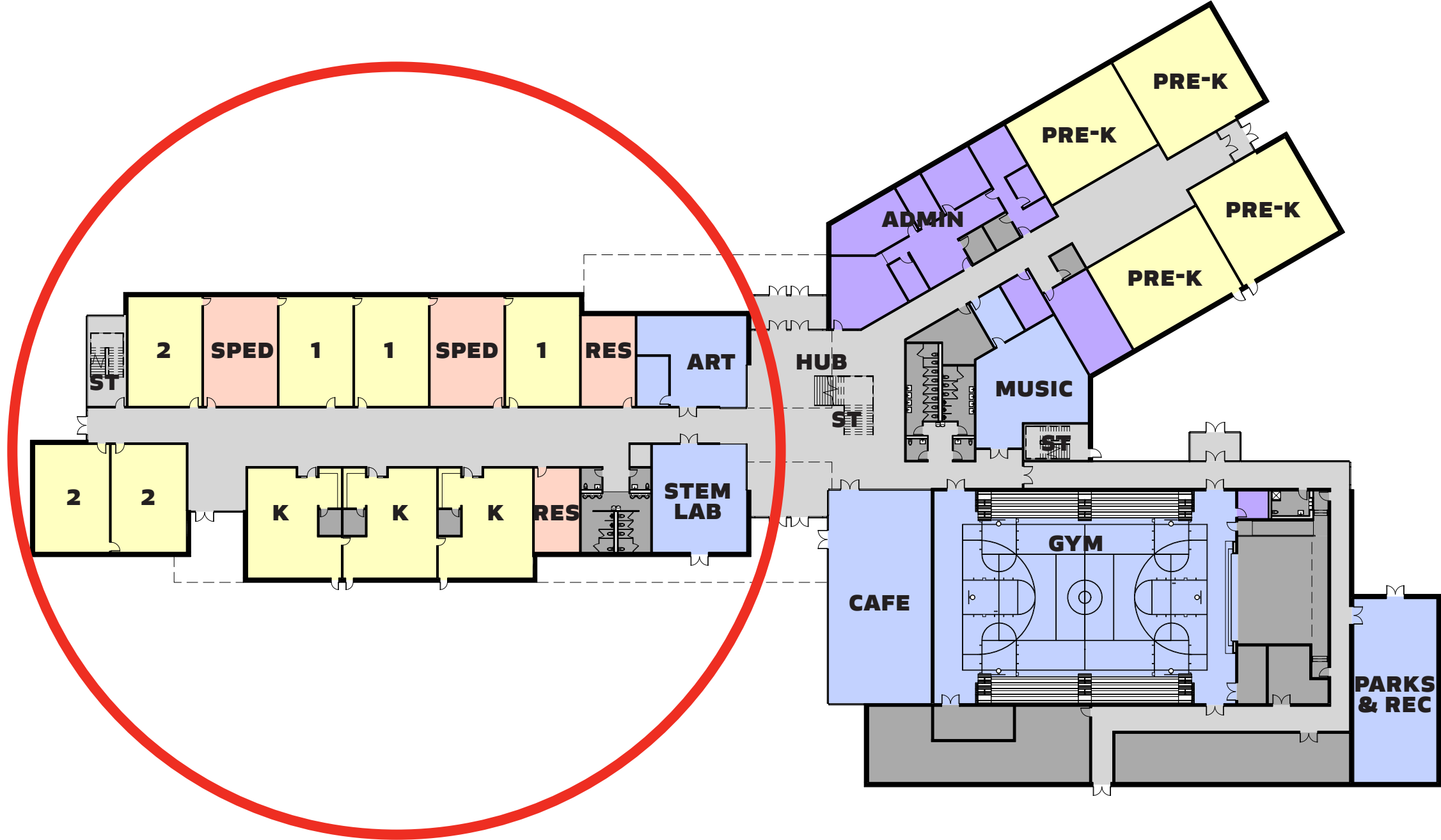
FIRST FLOOR KEY PLAN



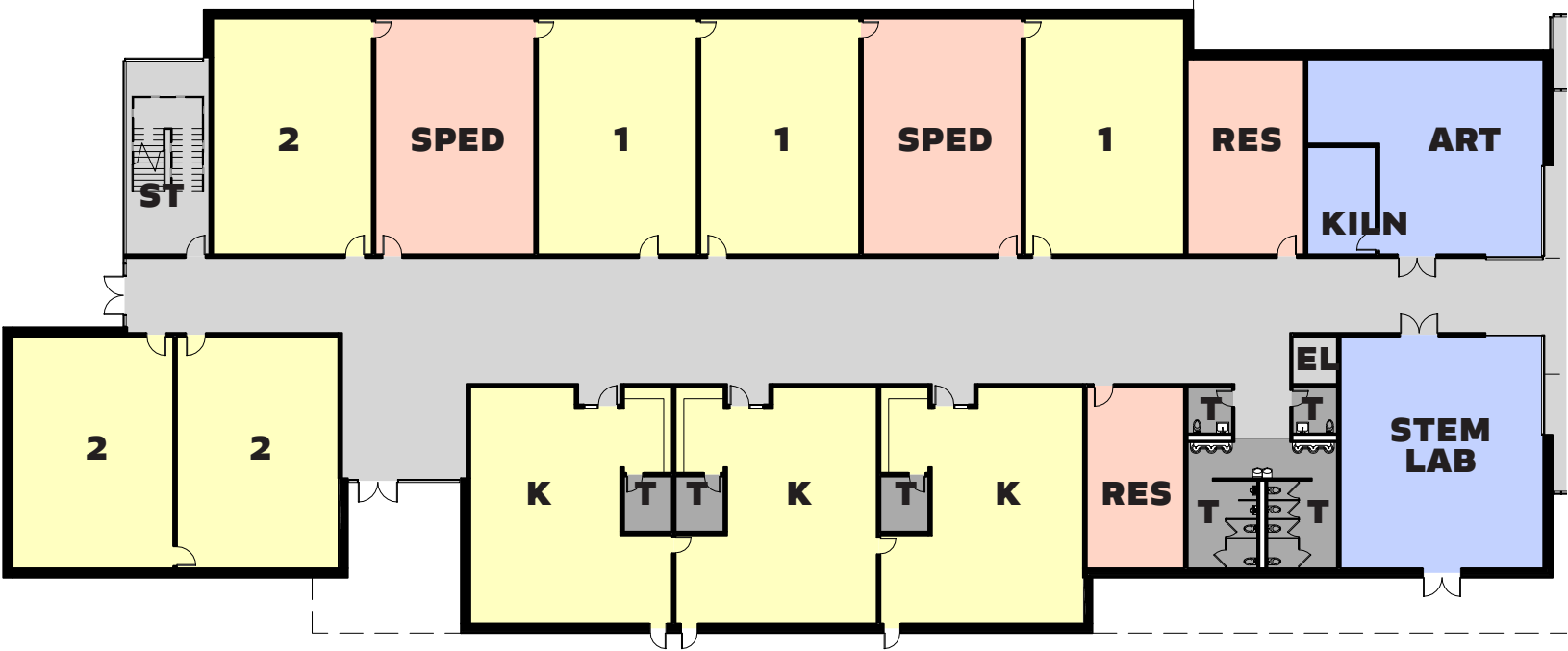
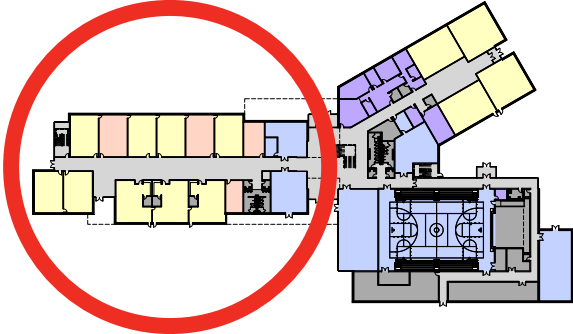
CAFETERIA/ GYMNASIUM/ STAGE



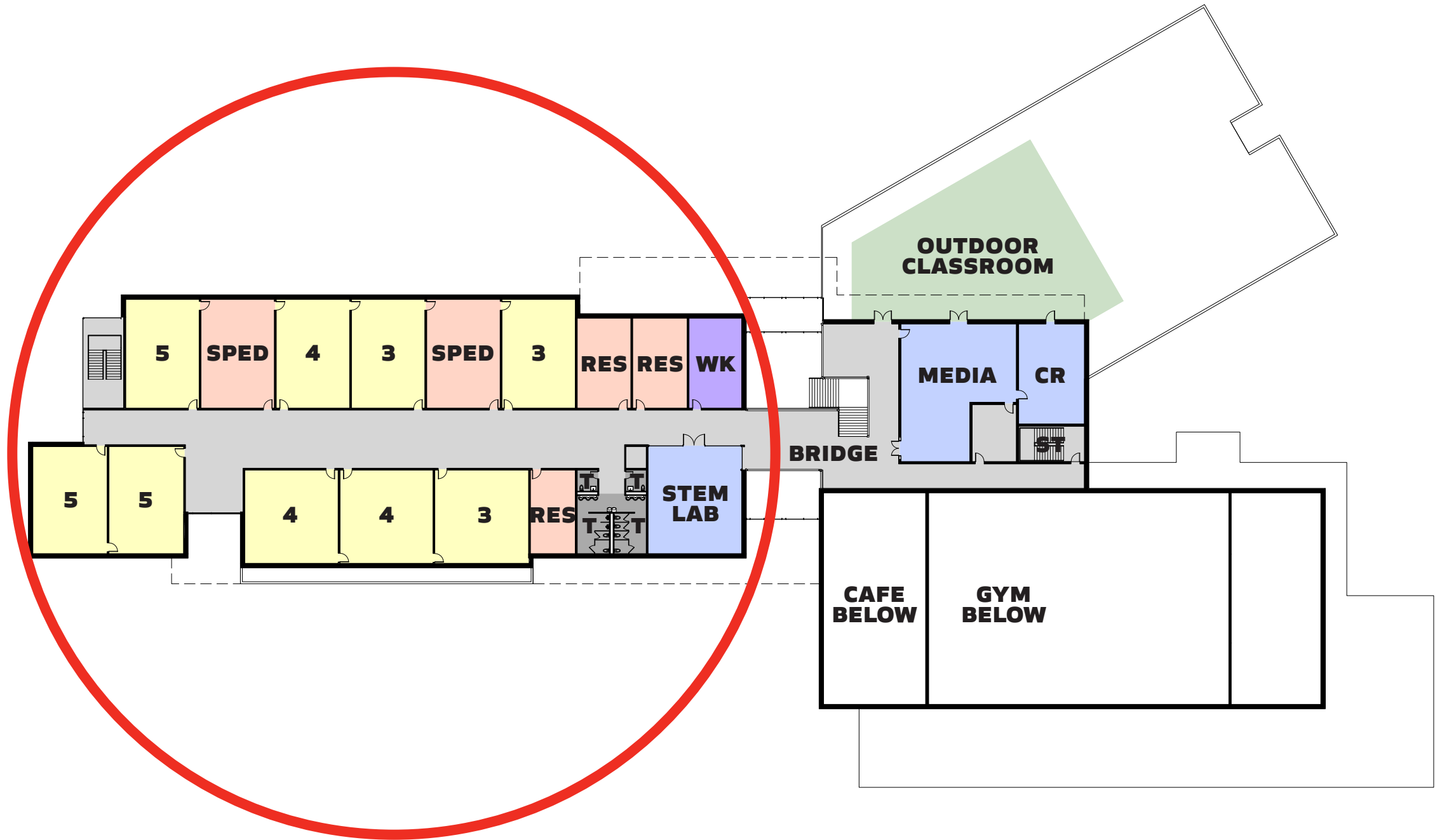
FIRST FLOOR KEY PLAN



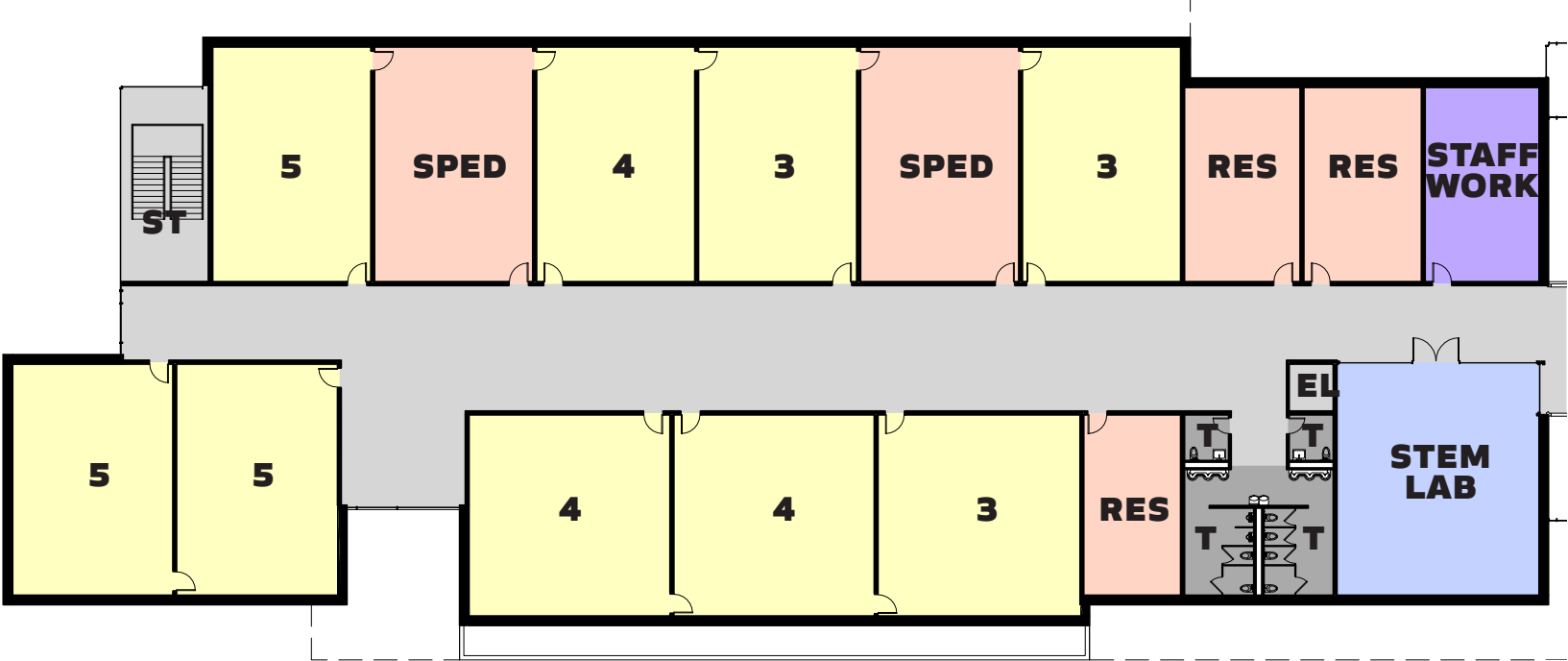
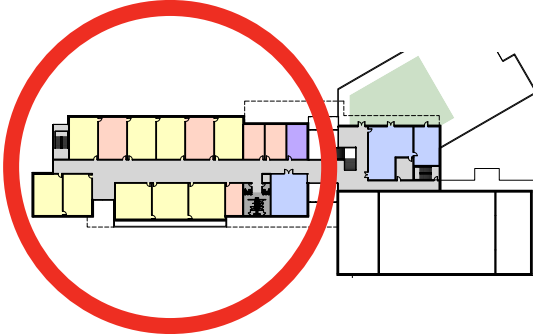
CLASSROOM COMMUNITIES - FIRST FLOOR



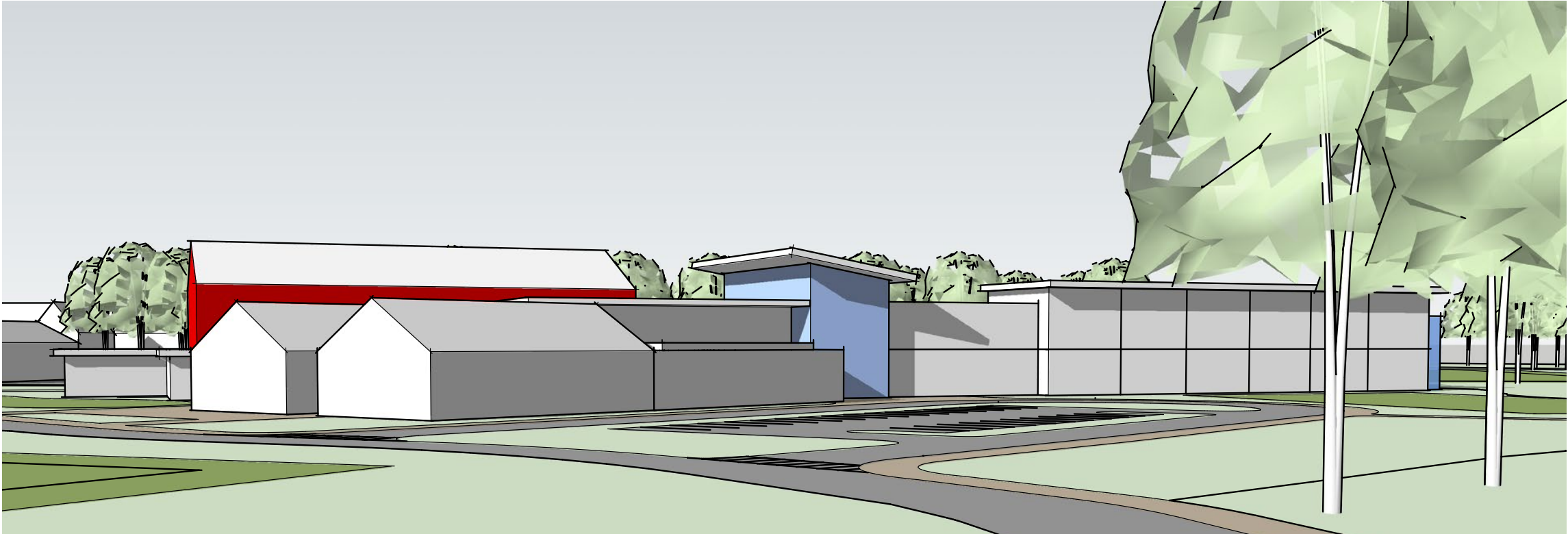
SECOND FLOOR KEY PLAN



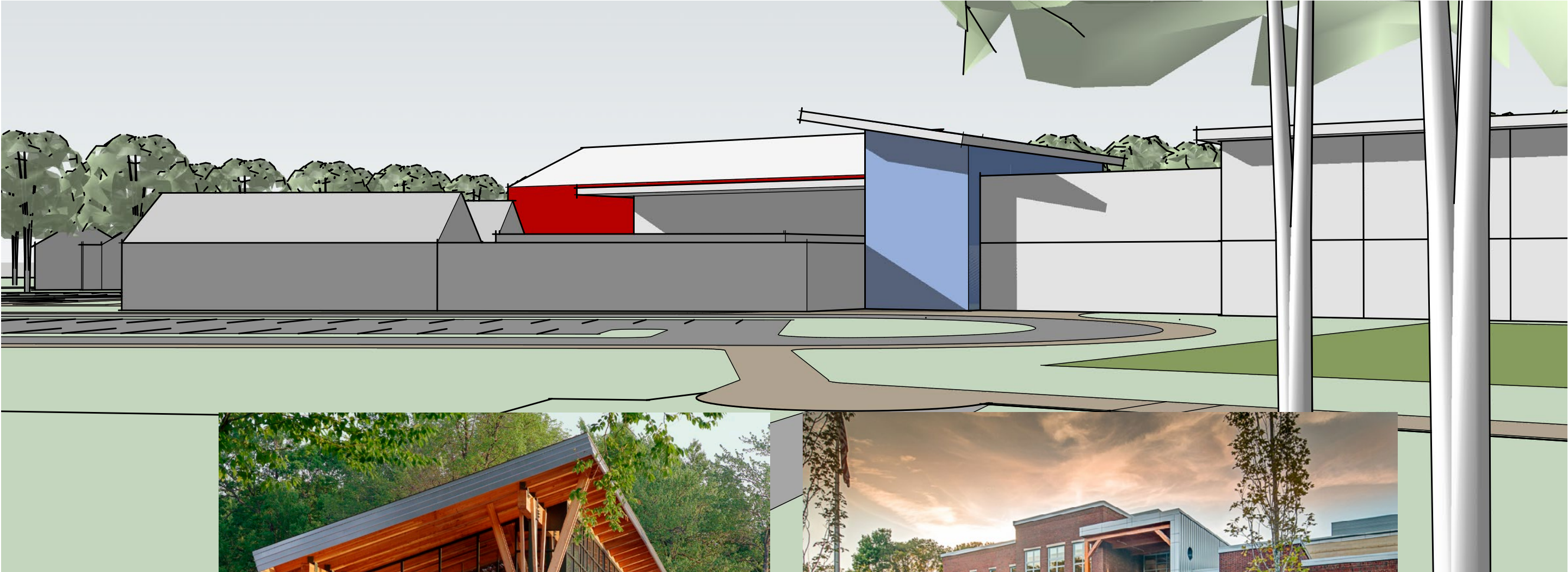
CLASSROOM COMMUNITIES - SECOND FLOOR



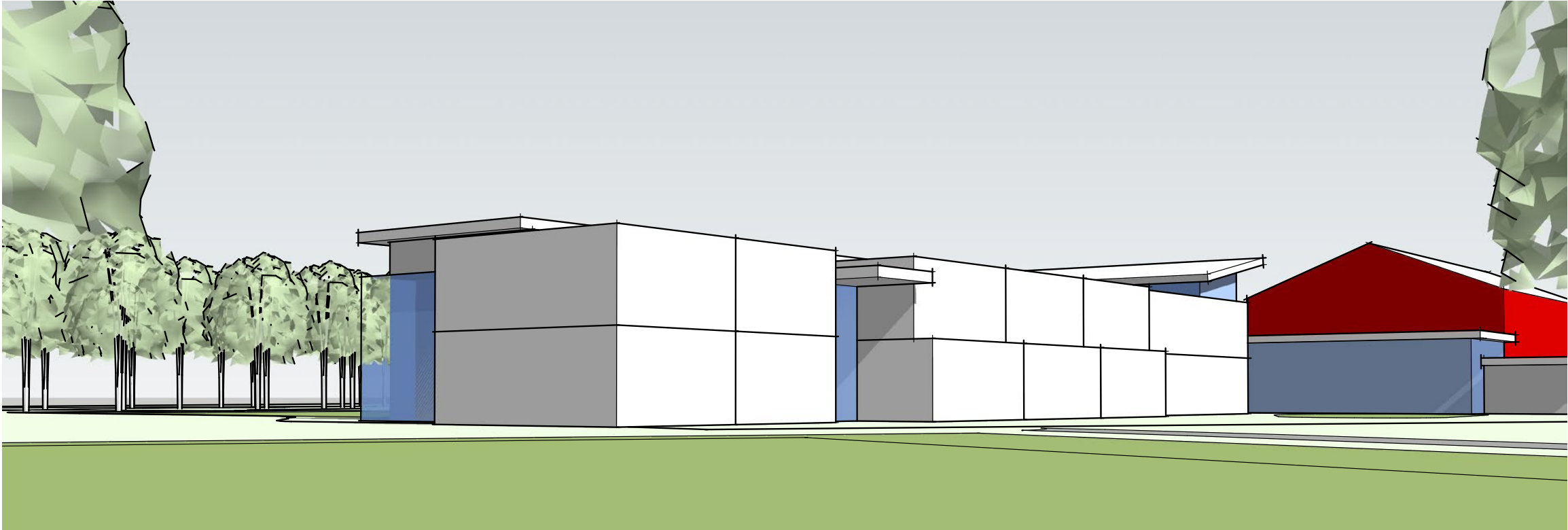
BUILDING MASSING



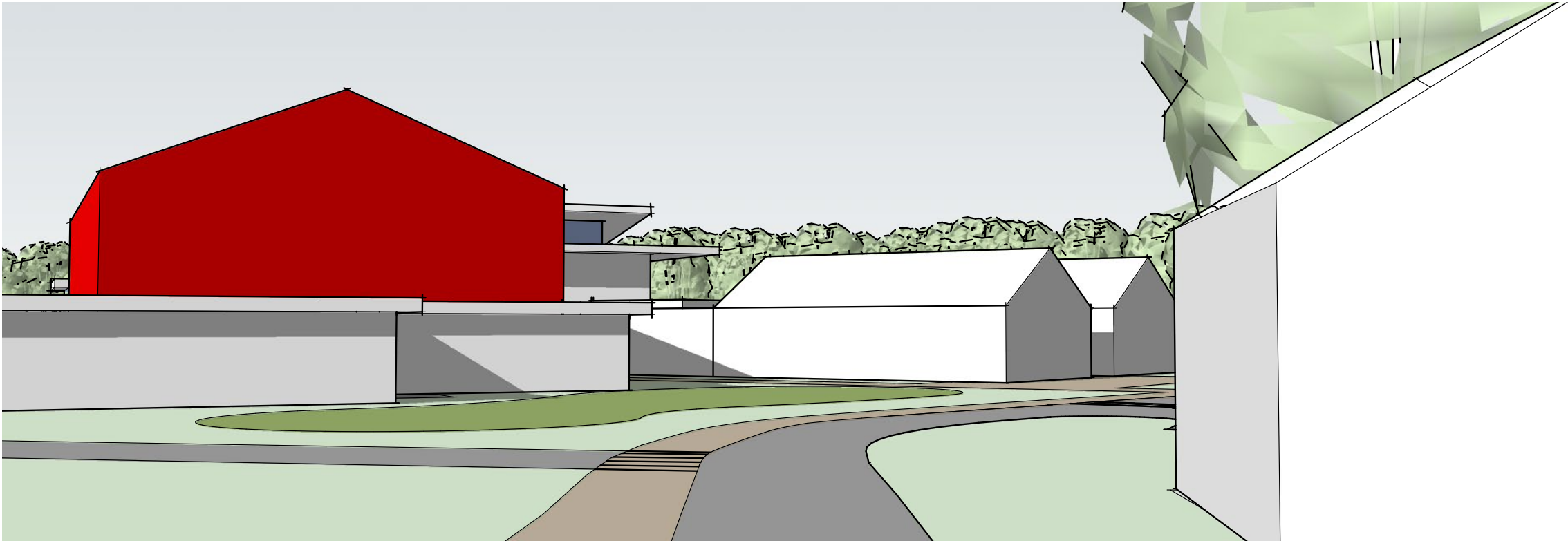
BUILDING MASSING



BUILDING MASSING



BUILDING MASSING



NEXT STEPS

4/26	SBC Meeting - Design Update
5/8	SBC Meeting - Design Update/ Interiors/ FF&E
5/22	SBC Meeting - Design Update/ Approval For Estimating
5/23	Community Meeting #4
6/12	SBC Meeting - Review Cost Estimates
6/26	SBC Meeting - Initial Approval of SD Package
7/9	SBC Meeting - Approval to Submit SD to MSBA



NEXT STEPS

WE NEED YOUR FEEDBACK

PARTICIPATE IN THE PROCESS

Attend Building Committee Meetings

Dates/Times Posted on the Building Committee Webpage

Watch for Newspaper & Web Announcements

Meetings are Replayed on Cape Ann TV - Channel 67 or Video Download

Upcoming Topics at Committee Meetings

- 4/26 SBC Meeting - Design Update
- 5/8 SBC Meeting - Design Update/ Interiors/ FF&E
- 5/22 SBC Meeting - Design Update/ Approval For Estimating
- 5/30 Community Meeting #4



NEXT STEPS

WE NEED YOUR FEEDBACK

FOLLOW THE PROJECT

WWW.MERSD.COM

Meeting Agendas & Minutes

Project Updates

Presentations & Documents

eMail Comments & Questions:
msbcquestions@mersd.com





THANK YOU

