



MANCHESTER MEMORIAL ELEMENTARY SCHOOL

SCHEMATIC DESIGN
PHASE **SBC MEETING #30**
JULY 9TH, 2018

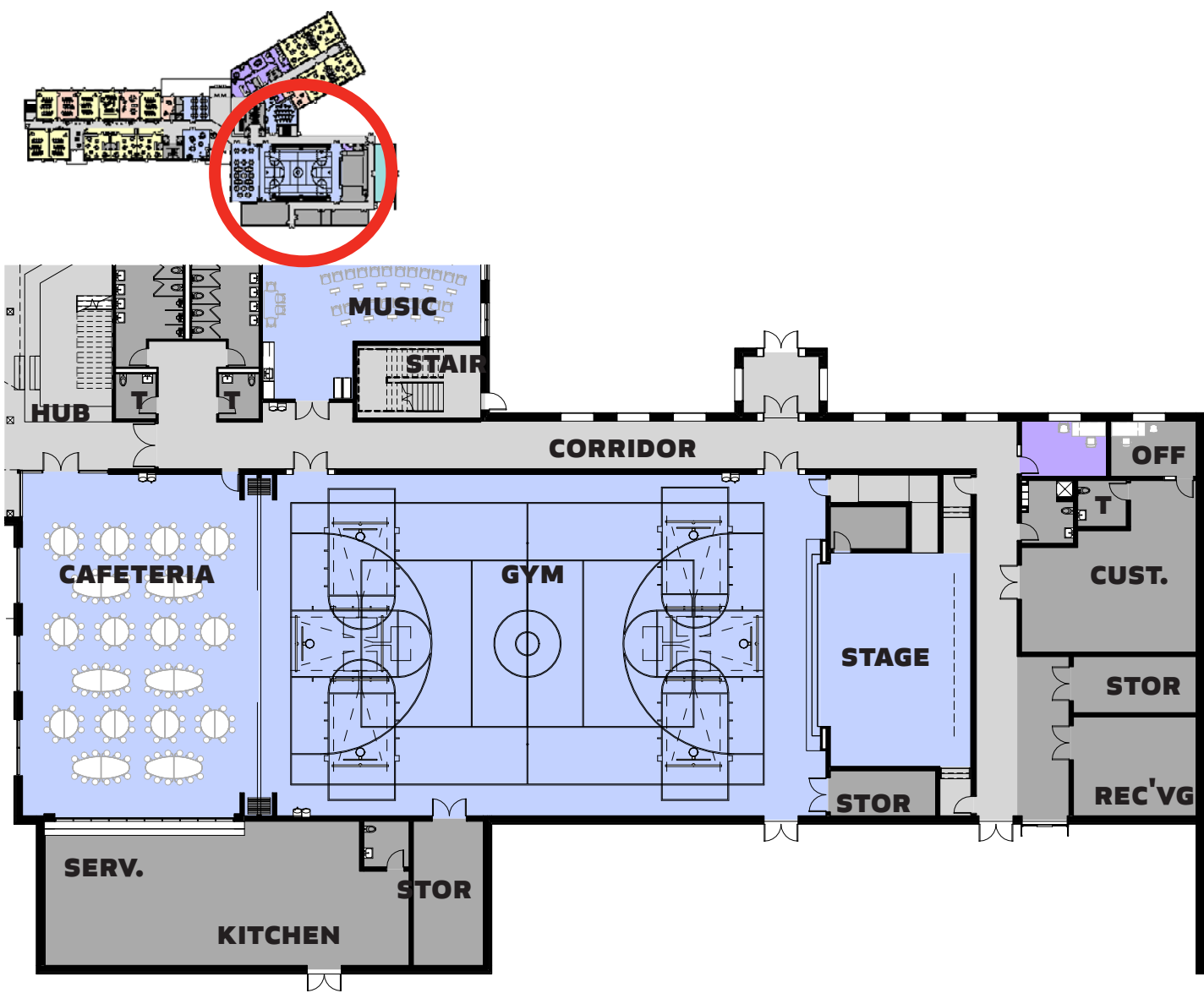


MANCHESTER MEMORIAL ELEMENTARY SCHOOL
MANCHESTER-ESSEX REGIONAL SCHOOL DISTRICT, MASSACHUSETTS

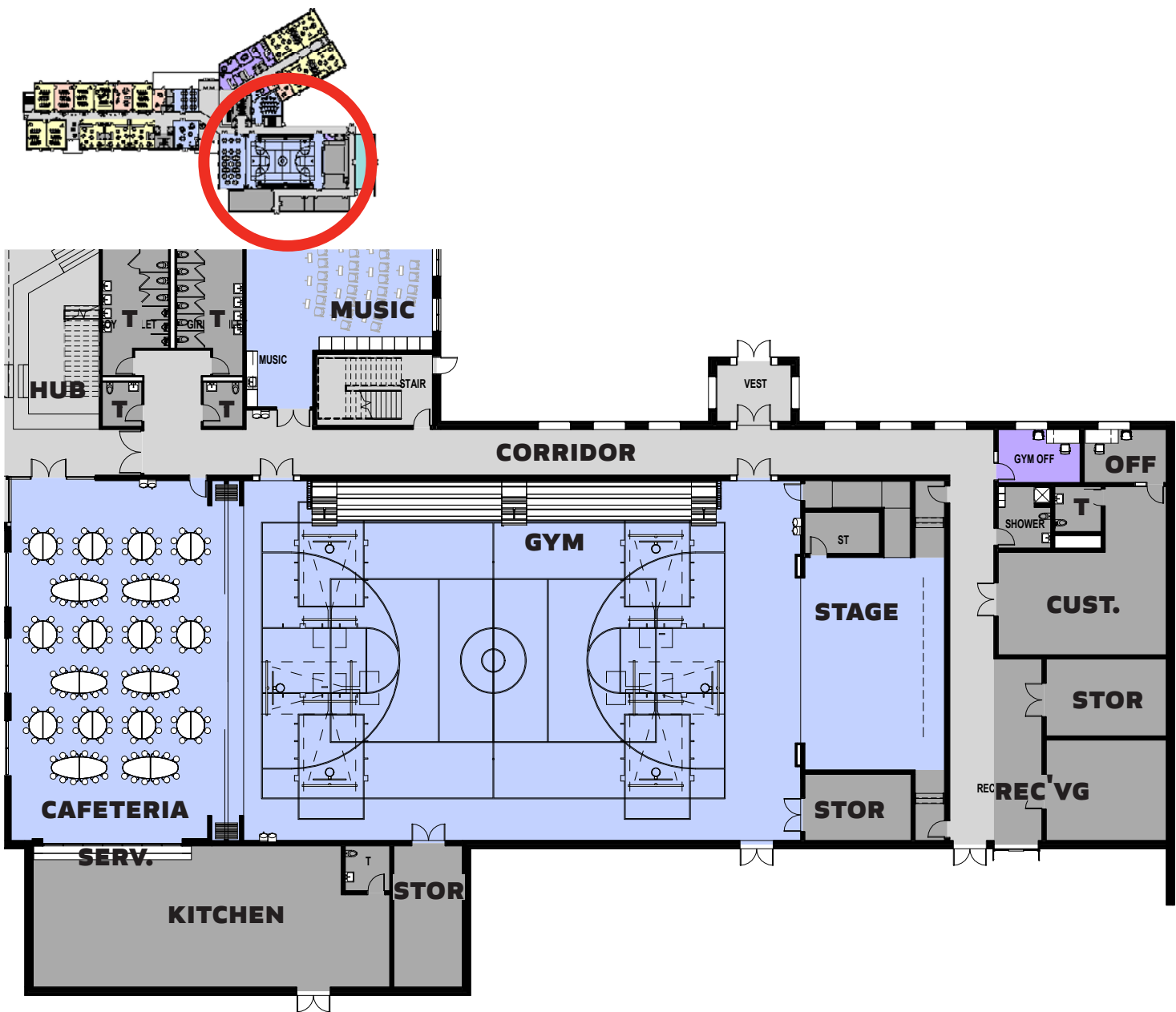


JCJ ARCHITECTURE

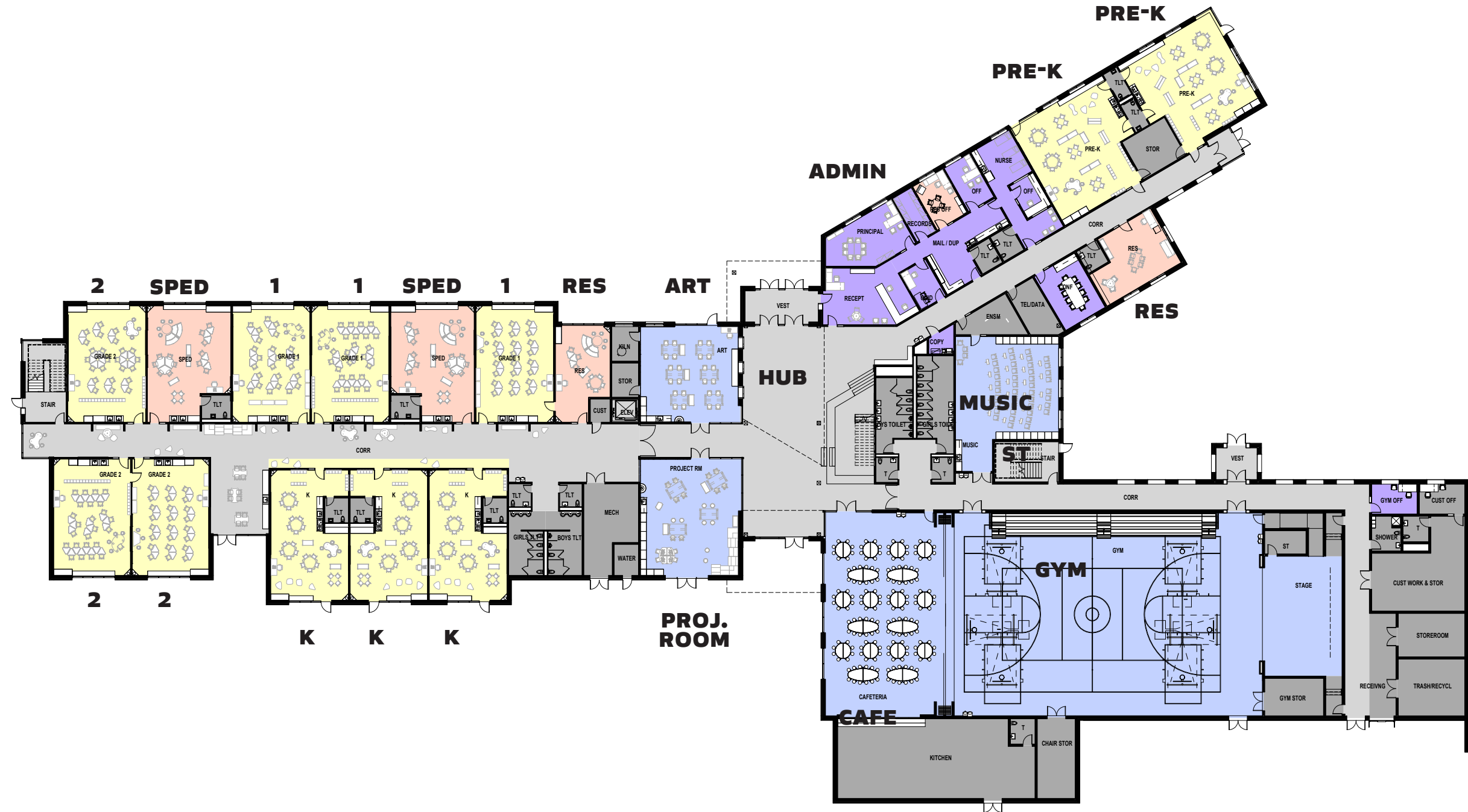
6,000SF GYM 6/26/2018



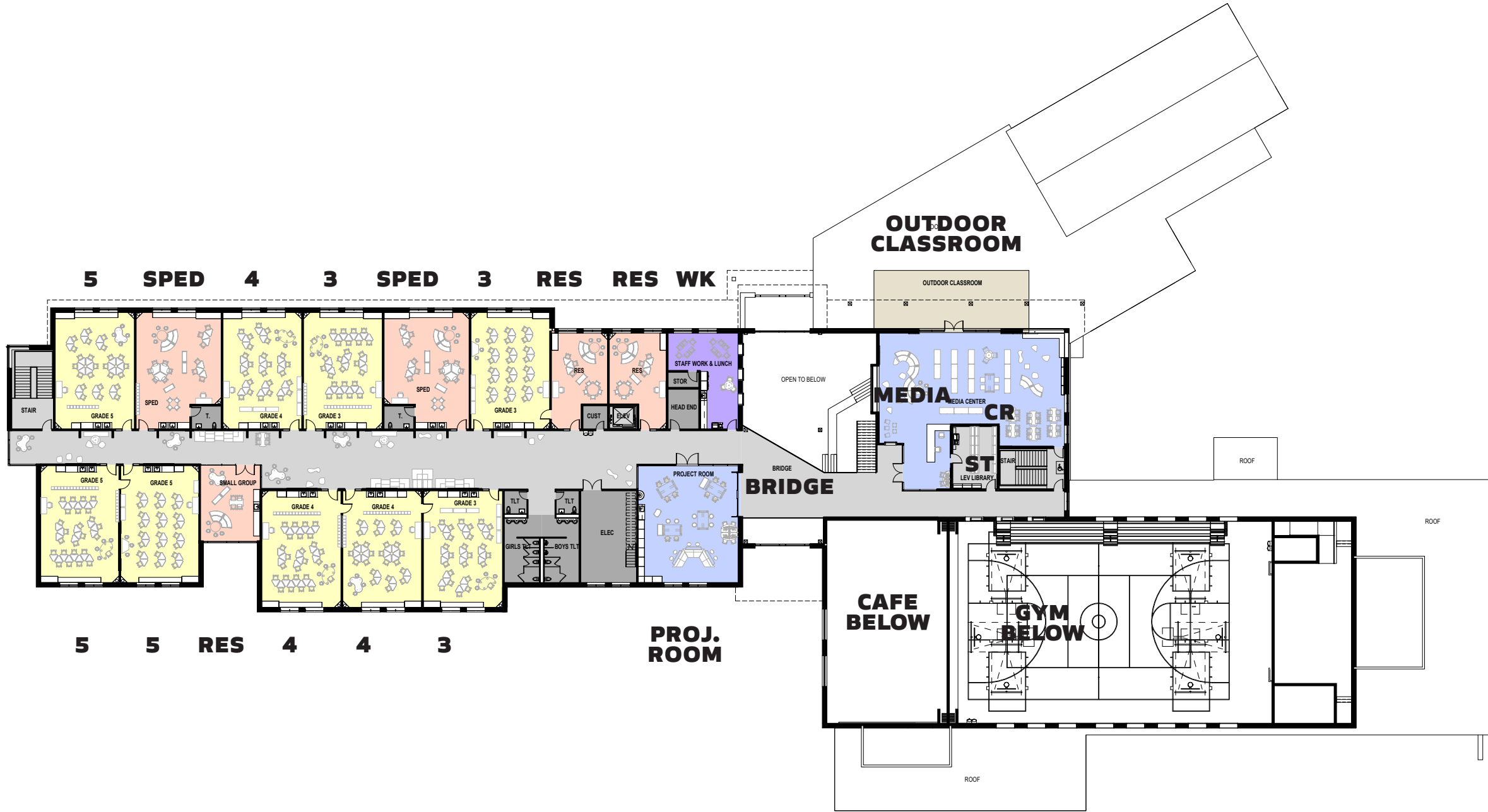
6,750SF GYM 7/9/2018



MAIN LEVEL PLAN UPDATE - OPTION 1



UPPER LEVEL PLAN UPDATE - OPTION 1



BUILDING MASSING - OPTION 1



BUILDING MASSING - OPTION 1: APPROACH



BUILDING MASSING - OPTION 1: MAIN ENTRY



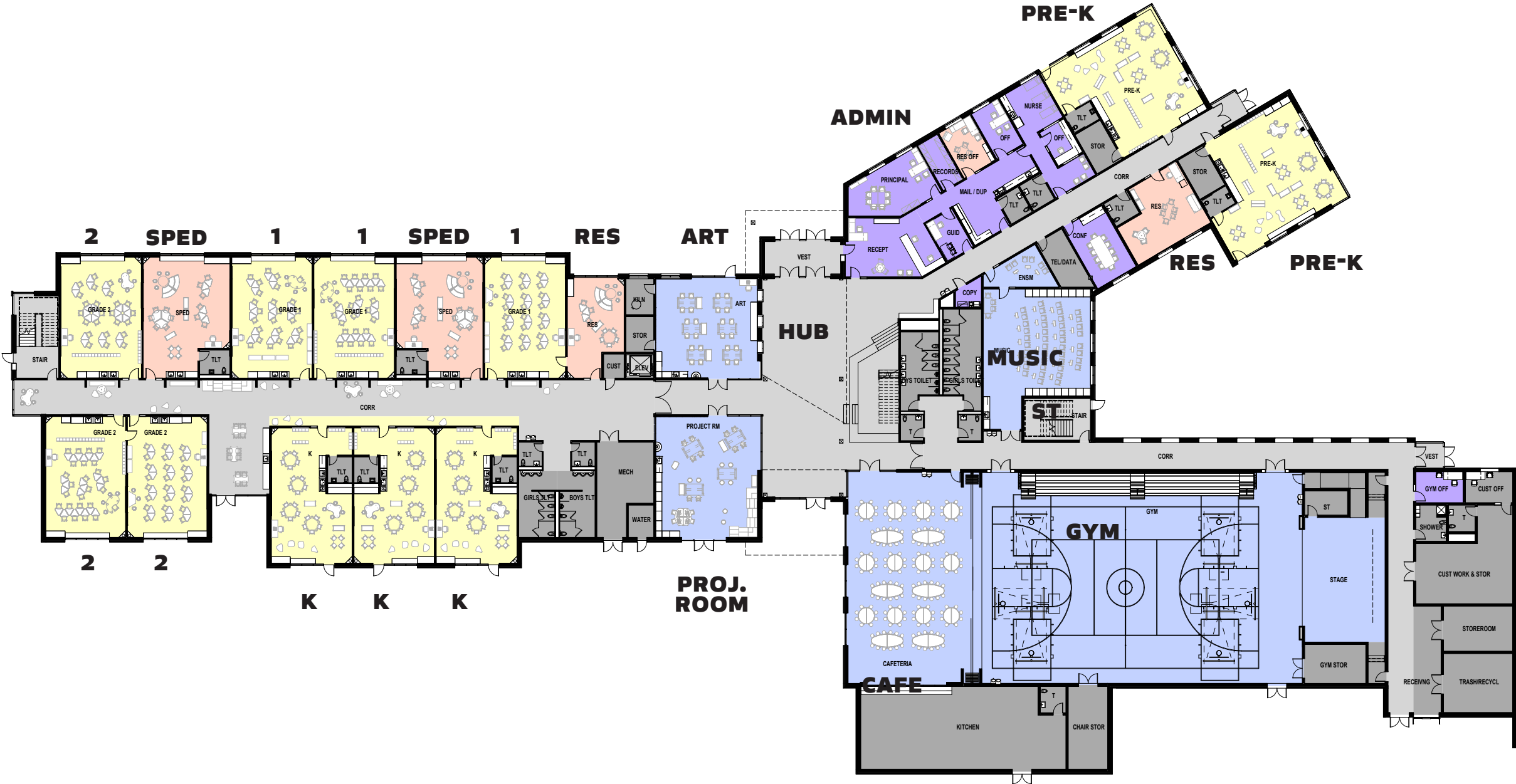
BUILDING MASSING - OPTION 1: VIEW FROM SUMMER STREET



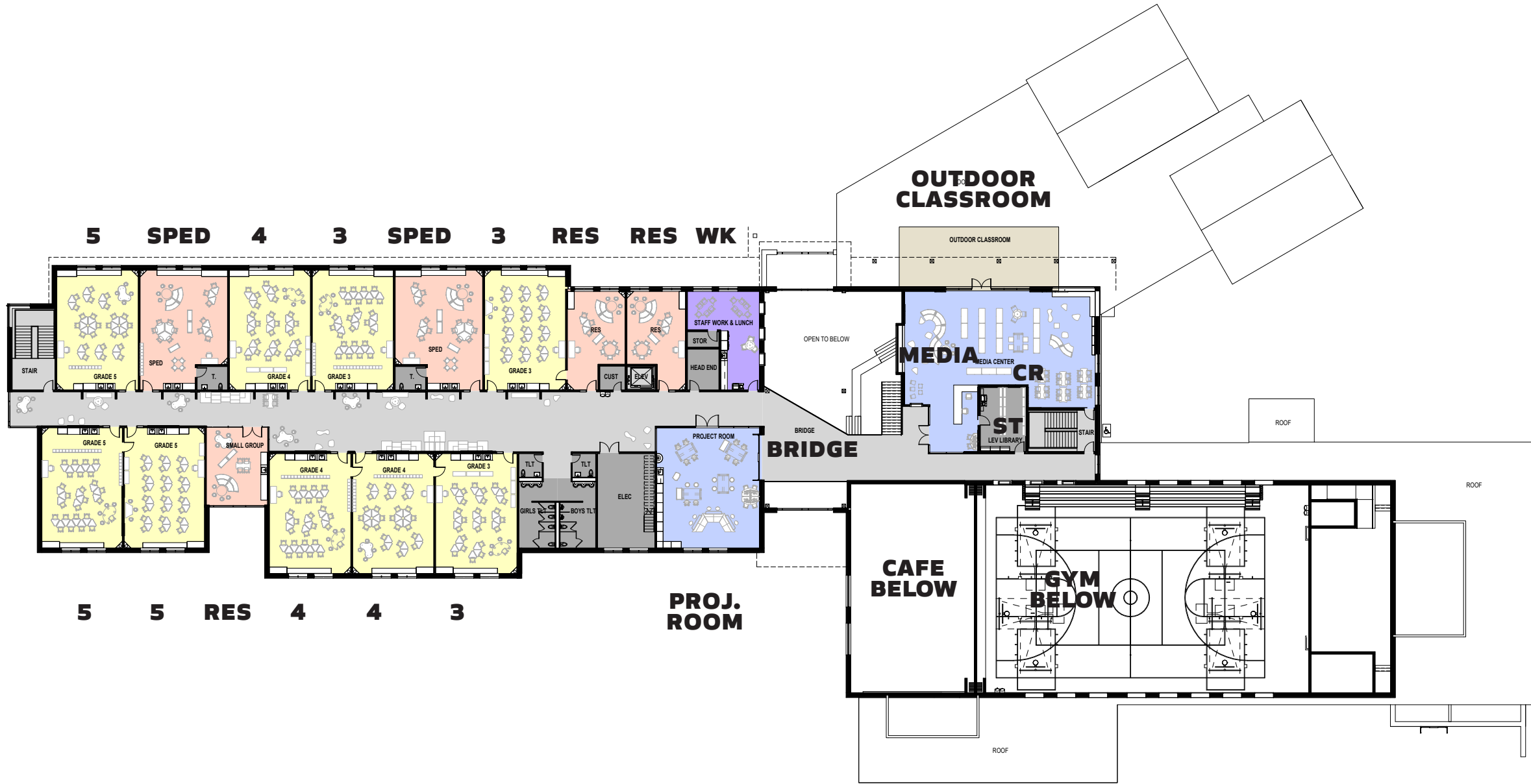
BUILDING MASSING - OPTION 1: GYM ENTRY



MAIN LEVEL PLAN UPDATE - OPTION 2



UPPER LEVEL PLAN UPDATE - OPTION 2



BUILDING MASSING - OPTION 2



BUILDING MASSING - OPTION 2: APPROACH



BUILDING MASSING - OPTION 2: MAIN ENTRY



BUILDING MASSING - OPTION 2: VIEW FROM SUMMER STREET



BUILDING MASSING - OPTION 2: GYM ENTRY





THANK YOU

