



MANCHESTER MEMORIAL ELEMENTARY SCHOOL

DESIGN DEVELOPMENT PHASE
SBC MEETING #37
JANUARY 22ND, 2019



MANCHESTER MEMORIAL ELEMENTARY SCHOOL
MANCHESTER-ESSEX REGIONAL SCHOOL DISTRICT, MASSACHUSETTS



JCJ ARCHITECTURE

OVERALL BUILDING MASSING



APPROACH



MAIN ENTRY



MAIN ENTRY



MAIN ENTRY



STUDY F



SOUTH ELEVATION



SOUTHWEST ENTRY



SUMMER STREET & GYM ENTRY



APPROVAL: EXTERIOR MATERIALS



MEDIA CENTER



MEDIA CENTER



INTERIOR FINISHES - CONCEPT



INTERIOR FINISHES



LINEAR PLANK WOOD CEILINGS & WALL SYSTEMS



PORCELAIN TILE FLOORING



DECORATIVE TILE ACCENT FLOORING AT HUB & CAFETERIA



INTERIOR FINISHES



ACOUSTIC WALL PANELS



WOOD ATHLETIC FLOORING AT GYM



INTERIOR FINISHES



SOLID VINYL TILE FLOORING WITH ACCENT COLORS

WALL TILE WAINSCOT AT CORRIDORS



DRY ERASE WALL PAINT



CARPET TILE



INTERIOR FINISHES



CERAMIC WALL TILE WITH ACCENTS



POLISHED CONCRETE WITH SHELLS AND GLASS INSET



POURED EPOXY RESIN FLOORING W/
ORANGE PEEL FINISH





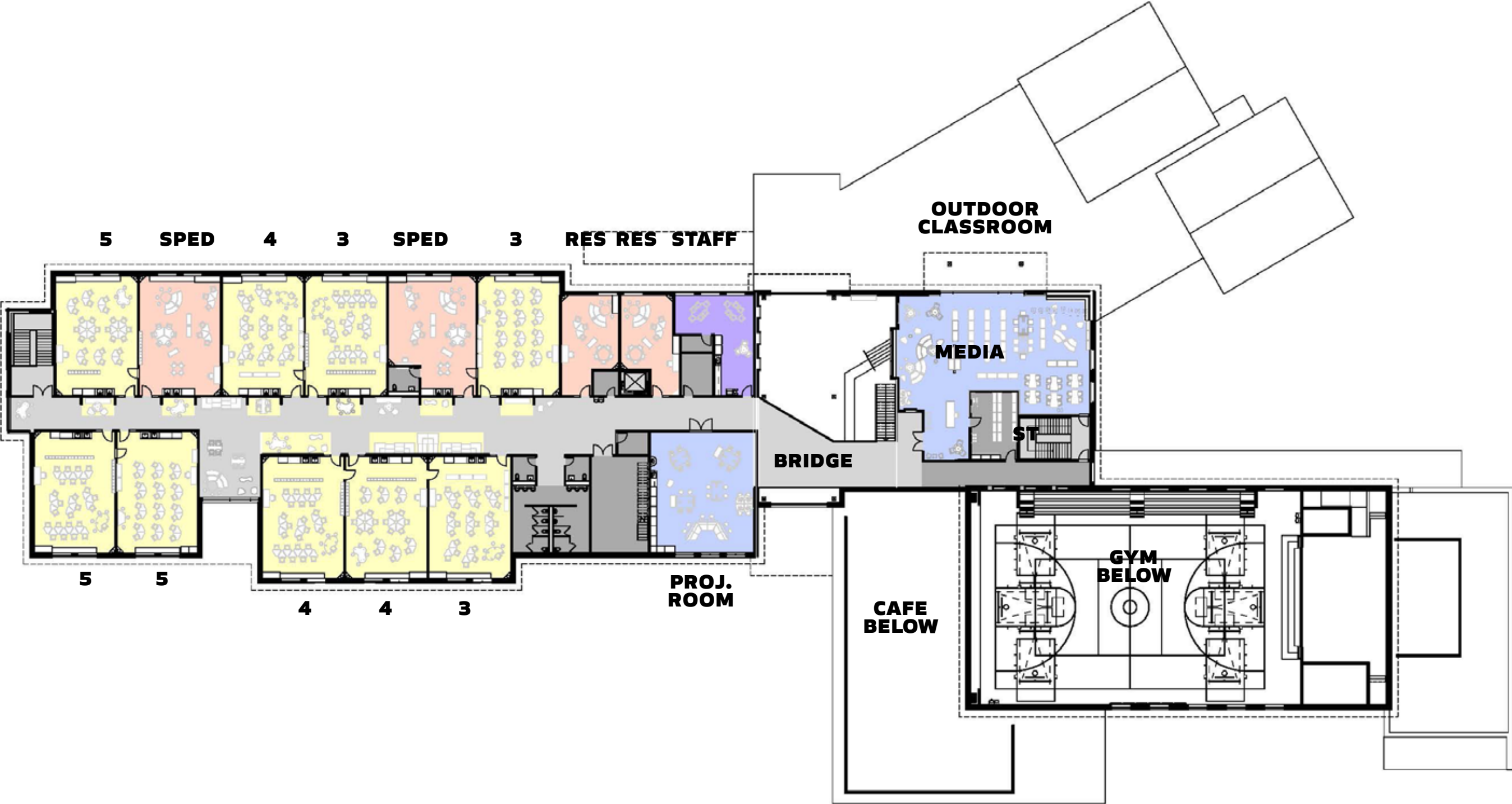
THANK YOU



MAIN LEVEL PLAN



UPPER LEVEL PLAN



CAFETERIA



CAFETERIA



CLASSROOM COMMUNITY - MAIN LEVEL



CLASSROOM COMMUNITY - MAIN LEVEL



TYPICAL CLASSROOM



TYPICAL CLASSROOM



KINDERGARTEN CLASSROOM

