

# MERSD

## Returning to School Safely



Wash your hands often



Use hand sanitizer



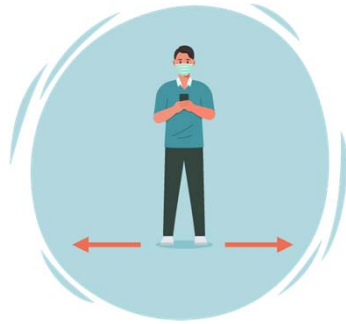
Wear a mask



Don't touch your face



Cover your sneezes and coughs



Avoid close contact



Use your own supplies



Clean your electronics

# Hybrid implementation criteria for K-5



## **Health and Safety:**

- Manchester and Essex are shaded green or gray according to MA COVID [map](#)
- Safety Guidelines are met and HVAC systems meet seasonal requirements
- MBTS and Essex BOH are in agreement with decision, have a notification system in place, and agree to partner with District to address contact tracing needs

## **Educational Program**

- Instructional supports are flexible and functional
- District can meet time-on-learning goals

## **Staffing**

- All classrooms staffed by a teacher
- Meets Teaching Assistant and Substitute staffing needs in each school
- Nurse and/or nurse assistant in each school
- Meets bus monitor staffing requirements

## **Financial**

- Hybrid learning can be accommodated within School Committee's budgetary allocation

# Hybrid implementation criteria for MS/HS



## Health and Safety:

- Manchester and Essex are shaded green according to MA COVID [map](#)
- Safety Guidelines are met and HVAC systems meet seasonal requirements
- MBTS and Essex BOH are in agreement with decision, have a notification system in place, and agree to partner with District to address contract tracing needs

## Educational Program

- Cohort size expands to 60 or greater for Middle High School, (teacher exposure = 120 students and State guidelines for gatherings = 10 people per 1000 ft )
- Full educational program continues

## Staffing

- All classrooms staffed by a teacher
- Meets Teaching Assistant and Substitute staffing needs in each school
- Nurse and/or nurse assistant in each school
- Meets bus monitor staffing requirements

## Financial

- Hybrid learning can be accommodated within School Committee's budgetary allocation

# Further District Considerations

- Surveillance Testing – a tool for increasing # of students on campus
- Events that may force a shutdown (large gatherings with no COVID safety measures)
- Lessons learned from other Districts
- Possibility of additional funding in the new calendar year (Federal)
- Full, in-school return = when social distancing requirements have ceased or eased



Questions?

