



# **MERSD School Committee EES Playgroup Working Group**

## **Update to Inform Next Steps**

**May 18, 2021**

**Awesome progress on installation of the structures!**









## Working Group vision

A dynamic area and structure for a variety of play opportunities

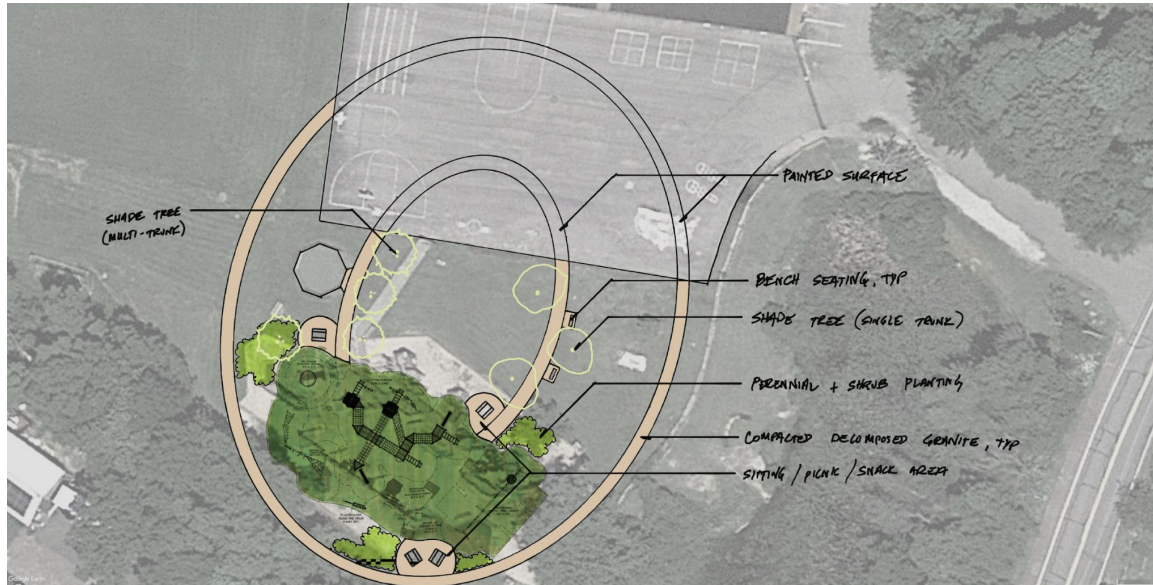
- incorporating structures and surrounding playspace

Continuation of a valued community resource and gathering area

- including community involvement in its development

# Full playground concept design

The design below is from March. The inner ring will not be a loop -- paint on the hot top will only be provided for the exterior loop; no pathway will be designated on the PIP surfacing. The working group visited the site with Jason on Thursday AM to discuss how the installation of the structures, slope at the rear of the site, and water drainage issues may impact the design and budget.





## Scope of work: current and proposed

Kompan/MERSD current scope includes:

- Playground structures
- Poured-in-place surfacing under structures
- Connect existing single path
- Prepare front and side seating areas

To complete the playground:

- Excavate and provide: crushed stone ring paths, rear seating area
- Furnish and install benches and tables
- Furnish and install decorative trees, shrubs, perennials



## Rough anticipated budget to complete design

- Rough estimates based on the March concept design
- This assumes all services and materials are fully purchased and contracted

Grading/excavation	\$11,000
Pathway stone (base and surface)	\$5,000
Benches and tables	\$17,000
Tree, Shrub, and Perennial Plantings	\$13,000
Overhead and Contingencies	\$18,000
<b>ESTIMATED PROJECT COSTS</b>	<b>\$64,000</b>





## Potential strategies to complete work ...

*... at no additional cost to the district.*

\*\* All contingent on SC approval \*\*

- PTO contribution: long-held Eagle's Nest maintenance funds (~\$35k)
- Material donations (from local companies or individuals)
- Donation of labor
  - Contractors coordinated through district, as was done with the tear down & clean up
  - Community member volunteers (coordinated event) for light-duty items, such as planting shrubs, assembling benches, spreading grass seed



## Impacts of not completing the full playground

- Minimal access without pathways.
  - Particularly given persistent water on site
  - Pathways are a potential solution to help address water drainage
- No place for supervising adults to sit, or for students to take a break.
- No shade around the structure -- it gets hot in warm weather.



# The policy question for School Committee

Can we accept contributions to the effort?

- EES PTO's long-held Eagle's Nest maintenance funds (~\$35k)
- Material donations (from local companies or individuals)
- Donation of labor
  - Contractors coordinated through district, as was done with the tear down & clean up
  - Community member volunteers (coordinated event) for light-duty items, such as planting shrubs, assembling benches, spreading grass seed